

# AVON

CAMPAIGN 9

+ SPECIAL  
OFFERS  
DETAILS INSIDE



**GRAB & GO MAKEUP SALE!**  
SAVE UP TO 60%

Best of  
K-Beauty

**GRAB & GO MAKEUP SALE!**  
up to 60% off

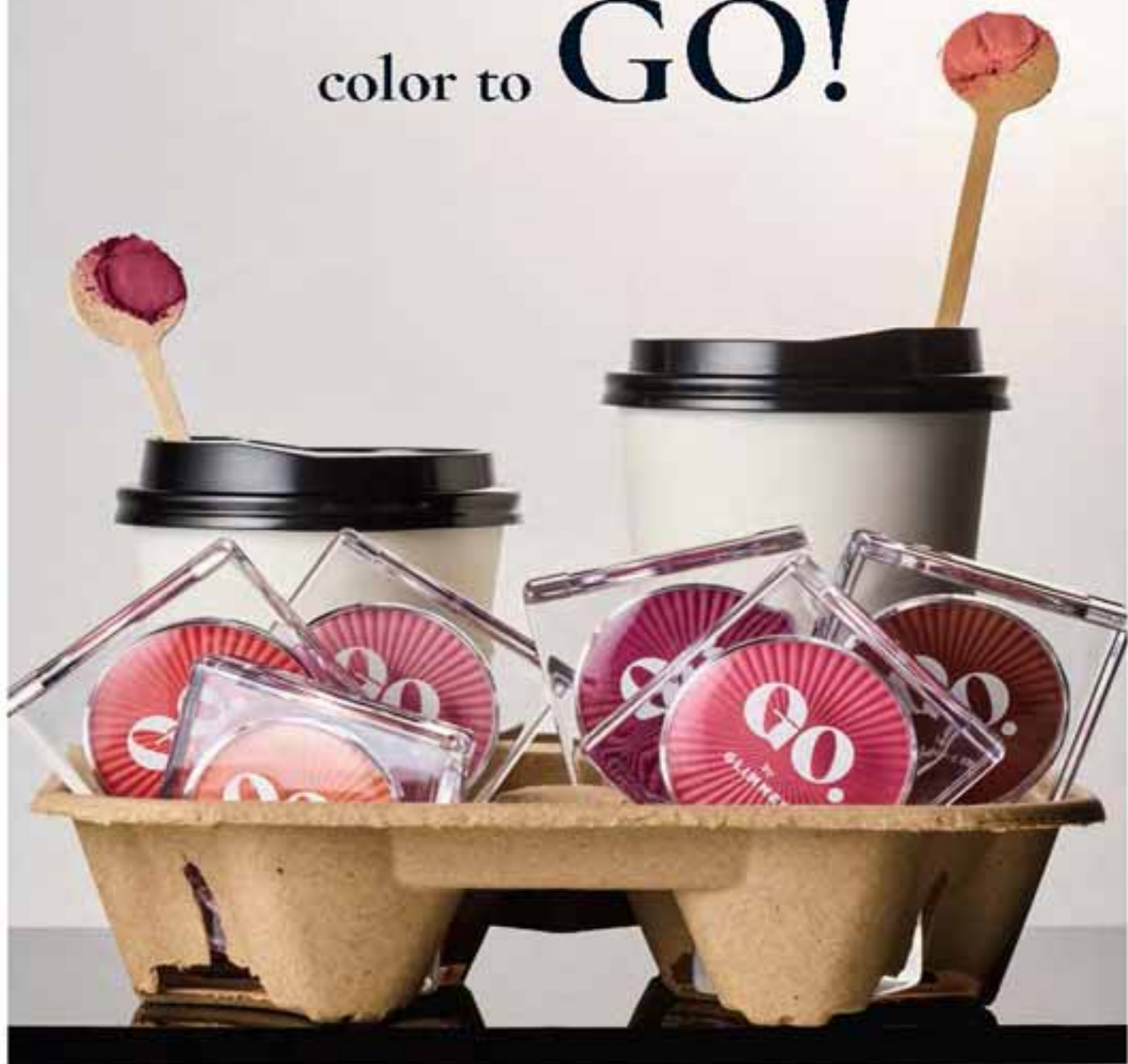
 **Shop AVON Online**

Click To Shop This Brochure 

Dianne Hernandez Ind. Avon Representative

Featured shade: GO, by Gimme!  
Cheek & Eye Shadow in Botanical Gardens.

color to **GO!**



**GO. by Glimmer Cheek & Eye Shadow**

Your day-to-date, get-gorgeous solution to go! Versatile multitasking blush and eyeshadow brings exquisite color, depth and dimension to cheeks and eyes. Silky, lightweight powder formula blends effortlessly with ultra-wearable shades with either a soft matte or fine pearl finish. Formulated without parabens, sulfates and phthalates.

.17 oz. net wt. reg. \$22

**\$15.50 \$11.49 each**



Spicy  
934-987



Feminine  
934-418



Botanical  
Gardens  
934-949



Me in  
934-642



Shady  
934-824



Me out  
934-183



Featured shade:  
GO. Be Glimmer  
Locked Lip Gel in  
Chestnut Crush.

GO. & GO MAKEUP SALE! up to 60% off



**Shop AVON Online**

Click To Shop This Brochure

Dianne Hernandez Ind. Avon Representative





**GO. by Glimmer  
Whipped Lip & Cheek Tint**

Ultimate multitasker delivers beautiful color to lips and cheeks. With apple fruit extract, an antioxidant known to help promote smooth, glowing skin. Full pigmented coverage with a velvety matte powder finish. Formulated without parabens, talc, sulfates, phthalates and mineral oil. .14 oz. net wt. reg. \$18

**\$14 \$10.49**

- |   |   |   |   |
|---|---|---|---|
| <br>Velvet<br>Vanilla<br>922-293 | <br>Cherry<br>Cocktail<br>922-289 | <br>Frozen Pink<br>749-994 | <br>Blushed<br>749-870 |
| <br>Hibiscus Tea<br>750-009      | <br>Peony<br>749-865              | <br>Flora<br>749-956       | <br>Jam<br>749-850     |



**Best of  
K-Beauty**

**GO. by Glimmer  
Lacquered Lip Gel**

Ultimate fusion of shiny gloss and tinted lip color in one. Non-sticky formula with gel-like texture glides on and helps to leave lips feeling soft and cushioned. Infused with a Super-Fruit Extract Complex that includes noni fruit, passionflower and amla fruit extract. Buildable coverage with a glossy finish. Formulated without parabens, talc, sulfates, phthalates and mineral oil. .14 oz. net wt. reg. \$17

**\$13 \$9.49**

- |  |   |
|--|---|
| <br>Soft<br>922-527         | <br>Fruity Fossil<br>922-312 |
| <br>Waffle Cone<br>750-023  | <br>Orchid Bloom<br>750-320  |
| <br>Whisper Pink<br>750-114 | <br>Sunset Rose<br>750-205   |
| <br>Seeing Red<br>750-391   | <br>Custard Crush<br>750-478 |





**fmg Glimmer  
Matte Lipstick**  
Vivid color. Velvety feel. Featherlight non-drying formula with pomegranate extract. Buildable medium-to-full coverage. Matte finish. Formulated without parabens, talc, sulfates and phthalates.  
.10 oz. net wt. reg. \$15  
**\$11.50 \$8.49 each**

- |   |   |   |
|---|---|---|
|  |  |  |
| Wild Orchid<br>171-431  | Garnet Sky<br>171-395   | Terra Nova<br>171-340   |
|  |  |  |
| Willow<br>171-450   | Sunset Mauve<br>171-360   | Chili<br>171-355  |

**GRAB & GO MAKEUP SALE! up to 60% off**



**fmg Glimmer Lip Conditioner**  
Leaves dry, cracked lips feeling soft and smooth. With mango seed butter, vitamin E, and jojoba and sunflower seed oils. Formulated without parabens, sulfates, phthalates and talc. .12 oz. net wt.  
794-578 reg. \$12  
**\$9.50 \$5.99**



**Shop AVON Online**

Click To Shop This Brochure

Dianne Hernandez Ind. Avon Representative



## SHIMMER

Constellation  
449-731Blaze  
896-880Wild Cherry  
440-708Hibiscus  
898-021Poppy  
897-651Rose Angel  
897-939Wildflower  
898-040Cyclone  
890-566Sierra Sunset  
890-805Aurora  
726-584Stellar  
726-550Eclipse  
440-818Eclipse  
448-740Lens  
895-470Honeyflower  
726-531Aster  
448-769Twilight  
449-822Delia  
726-350Plum Blossom  
449-765Tala  
449-112Desert Moon  
449-805Wildrose  
898-533

Tested to be safe.

fmg Glimmer  
Satin Lipstick

Lightweight creamy formula with pomegranate extract. Buildable coverage. Satin finish. Formulated without parabens and sulfates. .10 oz. net wt. reg. \$15

**\$11.50 \$8.49**

**fmg LOVE Plush Lip Oil**

Luxurious lip oil provides the perfect mix of beautiful shine, color and comfort. Lightweight non-sticky formula, with vitamin E and a blend of jojoba seed, argan and camellia oils, glides on smoothly and leaves lips feeling soft and moisturized. Available in sheer or shimmer finishes. Formulated without parabens and talc. .13 fl. oz. reg. \$17

~~\$13~~ **\$9.49**



**SHEER**  
First Coast  
756-351



**SHIMMER**  
Bachelorette  
756-366



**SHEER**  
Love Galore  
(pH-adjusting color)  
756-370



**fmg LOVE Lip Butter**

Sheer, high-shine formula with cupuaçu seed butter, mango extract, and apricot kernel and olive fruit oils. Buildable coverage. Vanilla scented. Formulated without parabens, sulfates and phthalates. .09 oz. net wt. reg. \$19

~~\$15~~ **\$10.99**



**Tease**  
063-132



**Rendezvous**  
063-166



**Love Affair**  
063-242



**Secret Crush**  
063-147



**fmg LOVE Lip Butter Crème**

Ultra-creamy weightless formula, infused with a nourishing blend of jojoba, sweet almond, apricot, olive and evening primrose oils, mango extract and shea butter, melts into lips and drenches them in moisture, leaving them buttery soft with a kiss of glossy color. Click pen applicator. Vanilla scented. Formulated without parabens, gluten, talc, sulfates and phthalates. .10 oz. net wt. reg. \$19

~~\$15~~ **\$10.99**



**Girlfriend**  
286-329



**Enchanted**  
286-333



**Cherished**  
286-405



**Sweetest**  
286-390



**fmg Glimmer**

**Mattitude Liquid Lipstick**

Vivid, saturated color with a comfortable, non-drying, transfer-resistant formula wears all day without fading or feathering. With vitamin E and a blend of olive and sunflower oils to help smooth and soften lips. Full coverage with a velvety soft matte finish. Formulated without parabens, sulfates and phthalates. Vegan. .12 fl. oz. reg. \$18

~~\$13~~ **\$6.99**



**Driven**  
419-050



**fmg Glimmer Birthday Balm Lip Crayon**

Sheer, soft shine formula with non-GMO shea butter. Formulated without parabens and gluten. .1 oz. net wt. reg. \$17

~~\$13~~ **\$6.49**



**Cupcake**  
950-000



**Fine Wine**  
375-725



**Private Party**  
949-990



**P11**  
375-601



**Lovin' Life**  
698-867



**Glimmed Lip**  
953-268



**Surprise!**  
375-710



**Birthday Post**  
375-730





**fmg Glimmer Lip Gloss**

Perfect balance of vivid color, dazzling shine and nourishing ingredients. Infused with jojoba seed oil, this non-sticky gloss provides dimension and a mirror-like shine to enhance the natural beauty of your lips while providing essential care and hydration. Perfect to wear on its own or layered under your favorite lip color. Formulated without parabens and talc. Available in shimmer or cream finish. .19 fl. oz. reg. \$15

**\$11 each**



**GRAB & GO MAKEUP SALE! up to 60% off**

**fmg LOVE at 1st Sight Eyeshadow Palette**

Nine buildable matte and shimmer shades create depth and dimension. Versatile formula with antioxidant vitamin E blends seamlessly. Formulated without parabens, phthalates, talc and fragrance. 23 oz. total net wt. 786-076 reg. \$28

**\$20**  
**\$14.99**



**fmg Glimmer Liquid Eyeshadow**

Silky lightweight formula glides on effortlessly for ultrafine pearly color that lasts all day. Water-resistant. Will not smudge or crease. No messy fallout. Buildable coverage from a sheer wash of soft sateen sheen to full-on shimmery wow. Formulated without parabens, phthalates, sulfates and talc. Available in Matte Sateen or Shimmer finish. .07 fl. oz. reg \$14

**\$11** **\$5.99**



- |   |                                      |                                    |  |                                    |
|---|--------------------------------------|------------------------------------|--|------------------------------------|
|   |                                      |                                    |  |                                    |
| MATTE SATEEN<br>Sunset Stone<br>S24-392 | MATTE SATEEN<br>Moonstone<br>S24-612 | MATTE SATEEN<br>Citrine<br>S24-631 | MATTE SATEEN<br>Tiger's Eye<br>S24-646 |                                    |
|   |                                      |                                    |  |                                    |
| SHIMMER<br>Pink Topaz<br>S24-608        | SHIMMER<br>Crystal Libac<br>S24-593  | SHIMMER<br>Rose Gold<br>S24-521    | SHIMMER<br>Foot's Gold<br>S24-517      | SHIMMER<br>Diamond Dust<br>S24-574 |

**fmg Glimmer Eyeshadow Quad**

Soft powder formula lasts all day. No messy fallout. Buildable coverage. Formulated without parabens and fragrance. Available in Multi and all Matte finishes. .21 oz. total net wt. reg. \$18

**\$14** **\$10.49**

For Multi Quad finishes, visit Avon.com



- |                           |                          |                            |                        |
|---------------------------|--------------------------|----------------------------|------------------------|
|                           |                          |                            |                        |
| MULTI<br>Mistress 885-902 | MULTI<br>Goddess 908-350 | MULTI<br>Muse 880-459      | MULTI<br>Mix 885-738   |
|                           |                          |                            |                        |
| MULTI<br>Vixen 908-474    | MULTI<br>Maven 884-750   | MULTI<br>Temptress 884-751 | MULTI<br>Kokoi 900-975 |
|                           |                          |                            |                        |
| MULTI<br>Siren 901-495    | MATTE<br>Calypso 741-261 | MATTE<br>Bombshell 741-170 | MATTE<br>Icon 741-439  |



**Shop AVON Online**

Click To Shop This Brochure

Dianne Hernandez Ind. Avon Representative



**SALE! up to 60% off**

**fmg Glimmer  
Liquid Eyeliner**

Quick-drying, long-lasting formula. Transfer-, sweat- and waterproof. Matte finish. Formulated without parabens, phthalates and fragrance.

.037 fl. oz.  
**Blackest Black**  
354-380  
reg. \$14

~~\$11~~ **\$5.99**



**fmg Glimmer  
Fine Line Brow Pencil**

Sweat- and smudge-proof, yet easy to remove.\* Retractable. Vegan. Formulated without parabens, talc, sulfates, fragrance and mineral oil.

.0032 oz. net wt. reg. \$10  
~~\$7~~ **\$4.99**



Blonde  
888-206



Soft Medium  
888-230



Medium  
888-278



Dark  
888-282

\*Based on Consumer Home Use Test Study of 22 applicants.

**MICRO TIP**

creates realistic hair-like strokes

**MATTE FINISH**

buildable, long-wearing, creamy, yet firm formula

**SPOOLIE**

blends and grooms for a natural look



**fmg Glimmer  
Liquid Color Eyeliner Pen**

Felt-tip applicator glides on smoothly, with precise application. Highly pigmented, lightweight formula. Smudge-, transfer- and sweat-proof.\*\* Formulated without parabens, talc, mineral oil, phthalates and fragrance.

.04 fl. oz. reg. \$14  
~~\$11~~ **\$5.99**



Smoked  
519-537



Forest  
519-518



Chestnut  
519-503



Indigo  
519-499



\*\*Based on Consumer Home Use Test Study of 62 applicants.



**fmg Cashmere Eyelash Primer**

Nourishing formula with biotin and collagen amino acids helps to keep lashes looking healthy and strong. Maximizes the performance of any mascara for gorgeous, lush lashes. Formulated without parabens, sulfates and talc. .35 fl. oz. 324-369 reg. \$24

**\$19 \$10.99**



**Shop AVON Online**

**Click To Shop This Brochure**

Dianne Hernandez Ind. Avon Representative

**SALE! up to 60% off**





**fmg Glimmer SuperExtend Nourishing Mascara**  
 Long-wearing lengthening formula with vitamin E, argan and coconut oils. Won't clump, smudge or flake. Formulated without sulfates and talc. .237 fl. oz.  
**Black 284-087**  
**Brown Black 721-510**  
 reg. \$17  
**\$11 \$7.99**



**fmg Glimmer SuperShock Volumizing Mascara**  
 Lash-building formula with plumping fibers. High-gloss finish. Won't clump, smudge or flake. Formulated without phthalates and fragrance. .338 fl. oz.  
**Black 562-577**  
 reg. \$17  
**\$11 \$7.99**



**fmg LOVE at 1st Lash Waterproof Mascara**  
 Lash-loving, waterproof formula with volumizing and lengthening fibers. With Lashrez, olive oil and vitamin E. Won't clump, smudge or flake. Formulated without parabens and sulfates. .29 fl. oz.  
**Blackest Black 480-953**  
 reg. \$19  
**\$15 \$10.99**



**fmg Glimmer Wash-Off Waterproof Mascara**  
 Waterproof volume. Washes off easily with soap and water. Formulated without phthalates, fibers and fragrance. .21 oz. net wt.  
**Black 535-560**  
 reg. \$17  
**\$11 \$6.99**



**fmg LOVE at 1st Lash Mascara**  
 Lash-loving volumizing and lengthening fibers. With lycopene, olive oil and vitamin E. Won't clump, smudge or flake. Formulated without parabens and sulfates. .3 fl. oz.  
**Blackest Black 698-670**  
 reg. \$19  
**\$15 \$10.99**

**GRAB & GO MAKEUP SALE! up to 60% off**

TIRTIR



**Shop AVON Online**

**Click To Shop This Brochure**

Dianne Hernandez Ind. Avon Representative



virtually try on select products!

## NEW SHADES

NEW! 20W Natural Ivory 572-939	NEW! 24W Soft Beige 574-805	NEW! 27N Camel 574-824
NEW! 34N Pecan 575-270	NEW! 40N Cinnamon 575-304	NEW! 51N Fudge 593-048
15C Fair 837-772	15N Fair Ivory 837-954	15W Cream 838-032
15C Fair Porcelain 838-066	17N Vanilla 838-070	17W French Vanilla 838-085
21N Ivory 838-248	22C Peach Beige 838-324	22W Sheer Beige 838-339
23N Sand 838-345	24N Latte 838-817	25N Mocha 838-821
27C Cool Beige 838-874	28N Oat 839-718	29C Trape Beige 840-297
30N Rich Honey 840-316	30C Hazel 840-340	33W Ginger 840-354
35N Walnut 840-189	37C Almond 840-375	45N Deep Cocoa 840-608
45N Saddle Brown 840-631	45W Chestnut 840-646	47N Ebony 840-650

Available in Cool (C), Neutral (N) and Warm (W) undertones.



## Wide range of shades to suit all skin tones!

Beloved **K-beauty** cushion foundation with **72 hours** of full, **flawless coverage and hydration** in one.

### ❖ TirTir Mask Fit Red Cushion Foundation

Lightweight non-greasy formula blends seamlessly, concealing imperfections and evening skin tone while keeping your skin nourished and comfortable all day. Packed with hibiscus and red propolis extracts, to help keep skin moisturized and healthy-looking. Breathable, non-cakey texture. Natural, satin finish. Includes puff applicator, removable seal and mirror.

.63 oz. net wt. reg. \$25

**\$20**





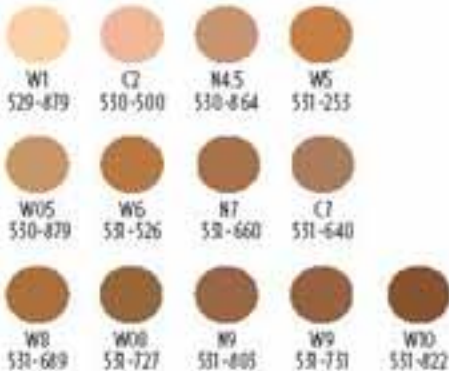
Featured shade: W5.

- 24 hours of breathable wear
- Visibly blurs pores, fine lines and wrinkles
- Soft-focus satin finish
- Flexible shades to match any skin and undertone

**fmg Cashmere  
Soft Focus Foundation**

Weightless hydrating formula with 2% niacinamide and oil-controlling silica powders. Helps to camouflage the appearance of imperfections and redness without transferring for smooth, even all-day complexion perfection. Blends effortlessly and never looks cakey. Buildable medium-to-full flexible coverage. Formulated without parabens and talc. 1.01 fl. oz. reg. \$25

~~\$20~~ \$14.99



Available in Cool (C), Neutral (N), Warm (W) and Warm Olive (WO) undertones.



 **Shop AVON Online**  
 Click To Shop This Brochure   
 Dianne Hernandez Ind. Avon Representative



Add a sheer wash of color to face and lips

**LIMITED EDITION**

**fmg Cashmere Multi-Balm**

A blend of seven skin-loving peptides and moisturizing ingredients helps to visibly enhance, smooth and refine the complexion. Soft-focus tinted formula with light coverage complements your skin so the real you comes through. Dewy luminous finish with no greasy after-feel. Vegan. Formulated without parabens and sulfates. .91 oz. net wt. reg. \$25

~~\$20~~ \$14.99



Helps to camouflage the appearance of imperfections, dark circles and redness without settling or transferring.

**fmg Cashmere Soft Focus Full Coverage Concealer**

24 hours of flawless, comfortable, breathable wear. Creamy, hydrating formula with 2% niacinamide, amino acids and lipids visibly blurs pores, fine lines and wrinkles. Blends effortlessly and never looks cakey. Buildable full coverage with a soft-focus, natural satin finish. Formulated without parabens and talc. .24 oz. net wt. reg. \$18

~~\$14~~ \$10.49



Available in Cool (C), Neutral (N) and Warm Olive (WO) undertones.



**GRAB & GO MAKEUP SALE! up to 60% off**



**fmg Cashmere Under Eye Primer**  
Helps diminish the look of dark circles and fine lines. With caffeine, green tea extract and a vegan alternative to collagen. Formulated without parabens, phthalates and fragrance. .317 oz. net wt. **010-429**  
reg. \$24

**\$19 \$9.99**



**fmg Cashmere Multi-Peptide Eyeshadow Primer**

Keeps eyeshadow in place and intensifies the color. Skin-loving ingredients help to reduce the appearance of fine lines and visibly plump and strengthen the skin barrier. Sheer formula with Matrixyl 3000 peptide blend, hyaluronic acid, collagen and panthenol. Formulated without parabens and talc. .31 oz. net wt. **906-385** reg. \$24



**fmg Cashmere Multi-Peptide Face Primer**

Preps skin. Revitalizing ingredients help to smooth the appearance of fine lines and pores and visibly plump and strengthen the skin barrier. Sheer gel formula with Matrixyl 3000 peptide blend, hyaluronic acid, collagen and niacinamide. Formulated without parabens, talc and fragrance. 1 fl. oz. **739-284**  
reg. \$24

**\$19 \$9.99**



**Shop AVON Online**

**Click To Shop This Brochure**

Dianne Hernandez Ind. Avon Representative





**fmg Match Prime Face Perfector**

Flaw-blurring mattifying oil-free formula visibly minimizes pores and fine lines. Sheer coverage. Matte finish. Formulated without parabens. 1 fl. oz.

**103-744**

reg. \$20

**\$16 \$10.49**



**fmg Match Embrace Gripping Primer**

Sheer, non-greasy gripping formula, with moisturizing hyaluronic acid, skin-softening glycerin and antioxidant-rich niacinamide and dragon fruit, helps to hold makeup in place, blur pores, boost radiance and even skin tone. Formulated without parabens, talc, sulfates and phthalates. Vegan. 1 fl. oz. **756-328** reg. \$19

**\$15 \$7.49**

**fmg Match Set Finishing Powder**

Loose powder blends effortlessly, creating an invisible veil that sets makeup for lasting wear. Translucent formula infused with light-diffusing ingredients known to help blur the appearance of imperfections and silica to help control shine. Goes on smooth and provides a soft matte finish. Formulated without parabens, phthalates, sulfates, fragrance and talc. Vegan.

.16 oz. net wt.

**Invisible 750-975**

reg. \$20

**\$16 \$10.49**



**GRAB & GO MAKEUP SALE! up to 60% off**

**fmg Match Tint Radiant Tinted Moisturizer**

Brightens skin tone, boosts moisture and blurs flaws. With passion fruit, chia and sunflower seed oils, and vitamin E and panthenol (provitamin B5). Buildable coverage. Radiant finish. Formulated without parabens. 1 fl. oz. reg. \$23

**\$18 \$11.49**

**FULL RANGE OF FLEXIBLE SHADES!**

		
Fair 639-597	Fair Light 639-601	Light 639-616
		
Light Medium 639-620	Soft Medium 639-635	Medium 639-640
		
Medium Deep 639-707	Tan Deep 639-726	Deep 639-730



**fmg Match Filter Serum Tint Foundation**

Instantly hydrates, blurs flaws and evens tone. With hyaluronic acid, vitamin E and berry complex. Buildable coverage. Demi-matte finish. Formulated without talc, parabens and fragrance. .31 oz. net wt. reg. \$23

**\$18 \$11.49**

			
Light 932-640	Light Medium 932-654	Medium Deep 933-153	Deep 933-172



Sherbet:  
helps the look of  
unevenness  
726-790

**fmg Match Wand Correcting Stick**  
Neutralizes unevenness, brightens and color corrects. Long-wearing formula with shea butter and vitamin E. Formulated without parabens, phthalates and sulfates.

.21 oz. net wt.  
reg. \$19  
**\$15 \$6.49**



**Shop AVON Online**

**Click To Shop This Brochure**

Dianne Hernandez Ind. Avon Representative



**SALE! up to 60% off**

**NEW****fmg Match  
Bronze Sculpting Powder**

Ultrafine powder effortlessly blends into skin, creating instant warmth and depth. Silky-soft formula with finely milled pigments. Infused with skin-loving niacinamide to help visibly blur pores and improve the appearance of dullness and uneven tone. Buildable coverage with a natural radiant finish. Perfect for all skin tones. Vegan. Formulated without parabens, talc, fragrance, sulfates and phthalates. .28 oz. net wt. reg. \$23

**\$16 each**

Featured Stock  
Blended

## sun-kissed skin is in!

Get that back-from-the-beach bronze without baking in the sun.



talc-free!



**GRAB & GO MAKEUP SALE! up to 60% off**

Featured shade:  
Sweetest Day.



**img LOVE True Devotion Liquid Blush**

Hydrating lightweight formula with blueberry extract melts effortlessly into skin, leaving a naturally radiant glow. Just a dot is all that is needed for a beautifully fresh and multidimensional blush. Blends easily for a smooth, even flush of blush look. Buildable creamy coverage with a subtle pearly finish. Formulated without parabens, sulfates, phthalates and talc. 15 fl. oz. reg. \$19

**\$15 \$10.99**



Sweetest Day  
625-663



ValerWine  
625-735



Candy Hearts  
625-678



Long Stemmed  
625-720



**Shop AVON Online**

**Click To Shop This Brochure**

Dianne Hernandez Ind. Avon Representative



**fmg Glimmer  
Be Blushed Cheek Color**  
Creamy formula with vitamin E.  
Buildable coverage. Dewy finish.  
Formulated without parabens,  
phthalates and fragrance.  
.14 oz. net wt. reg. \$17

**\$13 \$9.49**



Icy Petal  
022-854



Blushing Nude  
022-911



Tropical Peach  
022-964



Golden Rose  
022-840



Crushed Berry  
022-945



**fmg Complexion Blending Brush**  
Dual-ended: Rounded buffing foundation  
brush and concealer brush. 6½" L.  
Synthetic bristles. 933-210 reg. \$24

**\$19 \$13.99**

**fmg Precision Eye Brush**  
Dual-ended: Pointed pencil brush  
and angled eyeliner brush. 5¼" L.  
Synthetic bristles. 933-187 reg. \$17

**\$13 \$9.49**

**fmg Eyeshadow Blending Brush**  
Dual-ended: Crease brush and  
all-over eyeshadow brush. 6" L.  
Synthetic bristles. 933-320  
reg. \$17

**\$13 \$9.49**

**fmg Blush &  
Contour Brush**  
Dual-ended: Angled  
contour brush and  
tapered, oval blush  
brush. 7¼" L.  
Synthetic bristles.  
933-259  
reg. \$23

**\$18 \$13.49**





**fmg Glimmer Nail Lacquer**  
Nail-strengthening, long-wearing, no-chip formula. Formulated without parabens and phthalates. 4 fl. oz. reg. \$12

~~\$9.50~~ **\$5.99**



Featured shade:  
Supernova Red.

- |   |                                     |
|---|-------------------------------------|
|   |                                     |
| SATIN<br>Supernova Red<br>018-267           | SATIN<br>Night Sky Berry<br>602-658 |
|   |                                     |
| SATIN<br>High Magnitude<br>Mauve<br>018-840 | SATIN<br>Full Moon Flush<br>018-750 |



**GRAB & GO MAKEUP SALE! up to 60% off**

**fmg Glimmer  
Nail Base & Top Coat**  
Two-in-one base and top coat primes and shields nails. Glossy finish. Formulated without parabens and phthalates. 4 fl. oz. 018-161 reg. \$12

~~\$9.50~~ **\$5.99**



**fmg Glimmer  
Nourished Nail Cuticle Oil**  
Nourishing treatment for dry, damaged cuticles. Fortified with safflower oil to help restore and condition nails and cuticles. Formulated without phthalates, sulfates, parabens, toluene, formaldehyde and camphor. 4 fl. oz.

612-894  
reg. \$14  
~~\$11~~ **\$6.49**



**fmg Glimmer  
Nail Air Dry Drops**  
Need a fast finish? Accelerate your dry time with just a drop or two! Helps prevent smudges and nicks. Formulated without phthalates, sulfates, parabens, toluene, formaldehyde and camphor. 4 fl. oz.

612-913  
reg. \$14  
~~\$11~~ **\$7.99**



**Shop AVON Online**

**Click To Shop This Brochure**

Dianne Hernandez Ind. Avon Representative



**fmg Express Makeup Brush Wash**

Easily removes dirt, oil and makeup. With aloe vera and green tea extract. Formulated without alcohol and sulfates. 1 fl. oz.

141-368  
reg. \$15

~~\$12~~ **\$6.99**



**fmg Set & Fix Spray**

Controls oil and helps keep makeup smudge-proof. Non-greasy, non-sticky. Formulated without parabens, sulfates, phthalates and silicones.

1.7 fl. oz. 416-707  
reg. \$15

~~\$11~~ **\$5.99**



**fmg Moisturizing Eye Makeup Remover Lotion**

Cleans, refreshes and moisturizes as it whisks away eye makeup.

Formulated without parabens, sulfates and phthalates. 2.5 fl. oz.

603-840  
reg. \$9

~~\$6.50~~ **\$4.49**



**fmg Makeup Remover Wipes**

With vitamin E and aloe, chamomile, cucumber, marshmallow root and oat extracts. Resealable pack of 24 wipes. Formulated without parabens, gluten, sulfates, phthalates and fragrance.

333-867 reg. \$13

~~\$9.50~~ **\$7.49**



**fmg Flawless Complexion Sponge**

Dual-ended: Allow makeup application rounded side, and contouring and concealing flat sides.

2½" L x 1½" W.

100% PU, latex-free.

140-160  
reg. \$11

~~\$8.50~~ **\$5.99**



**Daily Beauty Tools Tweezers**

Amp up your beauty routine with angled tweezers.

Stainless steel. 3½" L.

747-020  
reg. \$4

~~\$3~~ **\$1.99**



SKIN CARE



**Anew Platinum  
Age Delay Serum**  
With niacinamide,  
panthenol and peptide.  
Formulated to visibly  
boost elasticity for a  
firmer look. Use AM and  
PM before moisturizer.  
1 fl. oz. 625-609  
reg. \$45

~~\$31~~ \$22.99

**\$9.99**

WITH ANY \$25 ANEW  
PURCHASE.

REG. \$45 VALUE.



**Shop AVON Online**

Click To Shop This Brochure

Dianne Hernandez Ind. Avon Representative





**Anew Platinum Day Cream**  
**Broad Spectrum SPF 25**  
 Helps skin look resculpted  
 and more radiant.  
 1.7 oz. net wt.  
 184-146 reg. \$42  
**\$30**



**Anew Platinum Night Cream**  
 Skin appears smoother overnight,  
 resculpted over time.  
 1.7 oz. net wt.  
 753-439 reg. \$42  
**\$30**



**Anew Platinum Eye & Lip Cream**  
 Redefine the look of eyes and lips.  
 Dual applicator. .5 oz. net wt.  
 902-614 reg. \$42  
**\$30**



**Anew Platinum Sculpting Sleep Mask**  
 An overnight mask that helps visibly lift, plump  
 and nourish skin while you sleep. Formulated  
 with skin-contouring tetrapeptide, panthenol,  
 niacinamide and yeast extract. 1.7 fl. oz.  
 835-033 reg. \$42  
**\$30**

# revitalizing hydrogel eye patches

## VISIBLE RESULTS:

- de-puffs
- firms under-eye area
- diminishes dark circles

### Anew Ultimate Multi-Performance Eye Patches

30 pairs/60 patches.  
Place eye patch in direction based  
on where you want the most  
coverage. 623-390 reg. \$34

**\$23**



### Anew Ultimate Multi-Performance Day Cream Broad Spectrum SPF 25

See wrinkles fade and youthful  
vibrance return. 1.7 oz. net wt.

541-299 reg. \$42

**\$30**



### Anew Ultimate Multi-Performance Night Cream

It works while you sleep to revive  
and recreate the look of youthful  
skin. 1.7 oz. net wt.

862-992 reg. \$42

**\$30**



### Anew Ultimate Multi-Performance Eye System

Visibly smooths crow's-feet  
and de-puffs under-eye bags.

Cream, .5 oz. net wt.

Elixir, .09 oz. net wt.

021-862 reg. \$42

**\$30**

**Shop AVON Online**

Click To Shop This Brochure

Dianne Hernandez Ind. Avon Representative

**SPECIAL**



**Anew Ultimate Night Repair Serum**

See improved tone and texture. With peptides, licorice, hyaluronic acid and niacinamide.

Use PM before moisturizer.

1 fl. oz. **080-692** reg. \$45

**\$31**



**Anew Ultimate Supreme Eye Balm**

Moisturizing formula infused with squalane, sunflower seed oil and antioxidant vitamin E. Wear alone or under makeup.

0.1 oz. net wt. **625-340** reg. \$45

**\$31**



**Anew Ultimate Supreme Dual Elixir**

With squalane and precious oils.

See a dramatic difference in even advanced signs of aging. Serum/Oil, .67 fl. oz. each.

**963-925** reg. \$60

**\$42**

**Anew Ultimate Supreme Radiant Firming Cream**

Daytime moisturizer with panthenol, niacinamide and peptides to help boost hydration, visibly restore brightness, firm skin contours, and improve skin texture and elasticity. 1.7 fl. oz.

**835-052** reg. \$60

**\$42**



**A**

AN AVON  
ICDM



**Anew Ultimate Supreme Advanced Performance Crème**

With Black Pearl Extract. See a dramatic difference in deep wrinkles and skin radiance.

1.7 oz. net wt. **014-735** reg. \$60

**\$42**

**OFFER** Details, see page 26.

Eyes see a visible difference:

**lift. firm.  
tighten.**

**KEY INGREDIENT:**

**Peptide Complex**

Peptides are amino acids that help boost skin renewal to help promote the look of firmness and elasticity.

**in 1 week**

**EYES LOOK AND FEEL  
DRAMATICALLY FIRMER**

Isa Knox Anew Clinical  
Collagen Booster  
Eye Lift Pro Dual Eye System  
Gel, 33 fl. oz.  
Cream, 33 fl. oz.  
564-550 reg. \$40  
**\$25**



**Shop AVON Online**

**Click To Shop This Brochure**

Dianne Hernandez Ind. Avon Representative



**SPECIAL**

# 100%

SAW IMPROVEMENT IN SKIN  
FIRMNESS AND RADIANCE  
AFTER ONE USE\*



**Anew Clinical Collagen Booster  
Firming Peel Off Mask**

With hydrating and skin-smoothing ingredients, it helps visibly lift, brighten uneven skin tone and refine texture.

2.3 fl. oz. **856-106**  
reg. \$25

**\$20**

\*Based on a clinical trial with 30 participants.



**Isa Knox Anew Clinical Collagen Booster  
Firming Cream**

With moisturizing and skin-plumping niacinamide and squalane. Hygienic, airless pump. 1.7 fl. oz. **131-380** reg. \$45

**\$30**



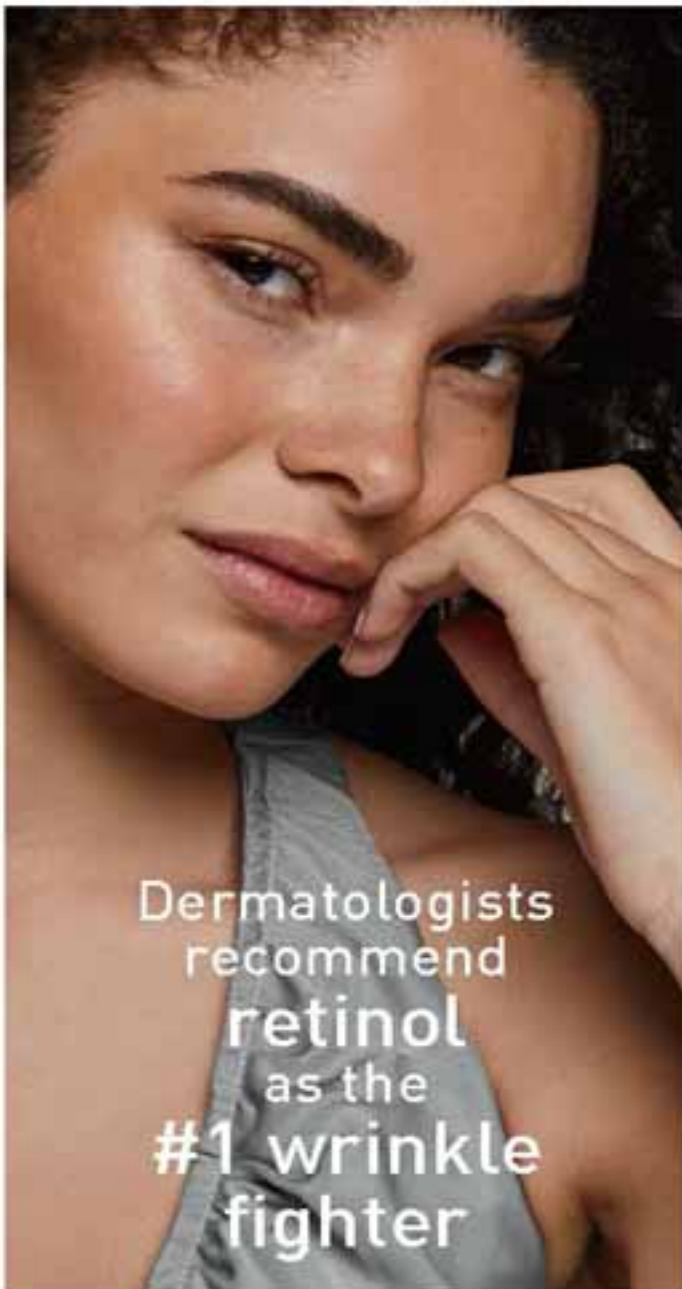
**Isa Knox Anew Clinical Collagen Booster  
Microneedling Polisher**

At-home alternative to micro-dermabrasion and micro-needling. Visibly diminishes pores, fine lines and wrinkles.

1.7 fl. oz. **798-592** reg. \$34

**\$21**

**OFFER** Details, see page 26.



Dermatologists  
recommend  
**retinol**  
as the  
**#1 wrinkle  
fighter**



**Isa Knox Anew  
Clinical Line Eraser with Retinol  
Targeted Treatment**

For targeted lines and wrinkles (expression lines) such as around forehead and mouth. .67 fl. oz.

925-159 reg. \$42

~~\$30~~ **\$22.49**



**Isa Knox Anew Clinical  
Line Eraser with Retinol Treatment**

Great for first-time retinol users.

Use AM/PM. 1 oz. net wt.

368-947 reg. \$45

**\$32**



**Isa Knox Anew Clinical  
Line Eraser with Retinol Eye Cream**

Helps improve fine lines, wrinkles, dark circles and puffiness for a more youthful, refreshed appearance. 0.5 fl. oz.

623-443 reg. \$40

**\$25**



**Isa Knox Anew Clinical  
Line Eraser with Retinol [1.0%]  
Advanced Retinol Serum**

Our highest dose of retinol. Dramatically reduces the appearance of fine lines, wrinkles and dark spots. Use PM. 1 fl. oz.

390-751 reg. \$50

**\$41**



**Shop AVON Online**

**Click To Shop This Brochure**

Dianne Hernandez Ind. Avon Representative



**SPECIAL**



\*In 6 out of 8 attributes tested over a 7-week period.

**Isa Knox Anew Clinical  
Revitalize & Reveal  
Extra Strength Retexturizing Peel**  
Results similar to a 35% pro glycolic peel.\*  
30 fragrance-free pads, 2" diam.

632-774 reg. \$42

**\$30**



**Isa Knox Anew Clinical  
Revitalize & Reveal  
Advanced Wrinkle Corrector**  
In just two weeks, wrinkles appear  
reduced. 1.7 fl. oz.

470-100 reg. \$42

**\$30**

skin looks  
smoother in  
just one night

**Isa Knox Anew Clinical  
Revitalize & Reveal  
Resurfacing Expert Smoothing Fluid**

79% as effective as a pro micro-  
dermabrasion without the same  
irritation. 1 fl. oz.

852-282 reg. \$45

**\$32**



**Anew Vitamin C Exfoliating Peel Pads**  
With PHA and pineapple extract, vitamin C, panthenol and glycerin. Exfoliates and helps visibly brighten. Formulated without alcohol and fragrance.  
4.3 fl. oz. 70 pads. 368-894 reg. \$34

**\$23**



**Anew Vitamin C Antioxidant Lip Treatment**  
Nourishes lips with vitamins C and E.  
.13 oz. net wt. 784-547  
reg. \$14

**\$10**



**Anew Vitamin C Illuminating Priming Moisturizer**  
With skin-smoothing silicones. Use after Brightening Serum. Wear alone or under makeup. 1.7 fl. oz. 914-671 reg. \$34

**\$24**



**Anew Vitamin C Brightening Eye Cream**  
Visibly reduces dark circles. Under-eye area looks brighter and more even-toned.  
.5 fl. oz. 953-602 reg. \$34

**\$24**



**Anew Vitamin C Glow Body Scrub**  
Sugar-based formula with pineapple and papaya enzymes and coffee seed extract exfoliates dry, dull skin. Citrus scent.  
9 oz. net wt. 443-752 reg. \$36

**\$21**



**Anew Vitamin C Nourishing Body Butter**  
With hydrating shea butter and niacinamide, plus vitamins C and E to help restore radiance. Fruity-floral and citrus scent. 7.8 fl. oz. 539-326 reg. \$34

**\$21**



**Shop AVON Online**

**Click To Shop This Brochure**

Dianne Hernandez Ind. Avon Representative



**SPECIAL**



**Anew Vitamin C Brightening Serum**  
 Skin is visibly energized and brightened  
 with the power of 10% pure vitamin C.  
 1 fl. oz. 522-066 reg. \$44  
**\$28**

**C spot go**  
 97% agree  
 skin discolorations  
 appear to fade\*

\*In a 4-week, consumer-  
 perception study.

**Anew Vitamin C  
 Targeted Skin Brightener**  
 With antioxidants  
 vitamin C, ferulic acid  
 and vitamin E. Skin looks  
 brighter and more even-  
 toned. 5 fl. oz. 169-177  
 reg. \$34  
**\$24**



**RETEXTURIZING  
DUO**

**Anew Clinical Revitalize & Reveal  
Advanced Wrinkle Corrector**  
1.7 fl. oz. **\$42 value**

**Isa Knox Anew Clinical Revitalize & Reveal  
Extra Strength Retexturizing Peel**  
30 pads. **\$42 value**

**BOTH FOR  
\$41.99  
\$84 VALUE  
923-945**



**REVITALIZING  
DUO**

**Anew Ultimate  
Multi-Performance Eye Patches**  
30 pairs/60 patches. **\$34 value**

**Anew Ultimate Supreme  
Radiant Firming Cream**  
1.7 fl. oz. **\$60 value**

**BOTH FOR  
\$44.99  
\$94 VALUE  
928-545**



**FIRMING  
DUO**

**Isa Knox Anew Clinical  
Collagen Booster Firming Cream**  
1.7 fl. oz. **\$45 value**

**Anew Clinical  
Collagen Booster Firming Peel Off Mask**  
2.3 fl. oz. **\$25 value**

**BOTH FOR  
\$34.99  
\$70 VALUE  
122-996**



**RENEWING  
DUO**

**Isa Knox Anew Clinical Collagen Booster  
Eye Lift Pro Dual Eye System**  
Gel, 33 fl. oz.  
Cream, 33 fl. oz. **\$40 value**

**Isa Knox Anew Clinical Line Eraser with  
Retinol [1.0%] Advanced Retinol Serum**  
1 fl. oz. **\$50 value**

**BOTH FOR  
\$44.99  
\$90 VALUE  
932-415**



 **Shop AVON Online**  
**Click To Shop This Brochure**  
Dianne Hernandez Ind. Avon Representative

Light Facial Cleansing Lotion with any duo-set on page 49. Limited quantities. \$14 value.



**Isa Knox Anew Solaire Everyday  
Mineral Face Protection Cream  
Broad Spectrum SPF 50**

Lightweight formula with zinc oxide. Suitable for sensitive skin. Water-resistant (40 minutes). 1.7 fl. oz. **368-909** reg. \$32

**\$26**



**Isa Knox Anew Solaire  
Everyday Face  
Protection Lotion Broad  
Spectrum SPF 50**

1.7 fl. oz. **673-990** reg. \$32

**\$26**



**Isa Knox Anew Solaire  
Active Face & Body Protection  
Lotion**

**Broad Spectrum SPF 50**  
2.7 fl. oz. **399-873** reg. \$38

~~\$34~~ **\$22.49**



93% of women believe it dramatically improves skin's overall appearance.\*

**Anew Power Serum**  
Visibly improves wrinkles, radiance, firmness and texture. Use AM and PM after cleansing, before moisturizing. 1 fl. oz. **894-380** reg. \$45

**\$30**

\*Based on those who expressed an opinion in a consumer perception study.

## Nourish

**Beyond Glow  
Lipcerin  
Intensive  
Nourishing  
Lip Care**  
reg. \$25



**\$18**



Nourishing  
052-325

An intensive, glistening formula that nourishes dry lips with moisture. With a plumping peptide, moisture-enhancing glycerin and smoothing shea butter. Clear finish. .5 fl. oz.

## Plump

**Beyond Glow  
Lipcerin  
Plump  
and Cool  
Lip Care**  
reg. \$25



**\$18**



Plump and Cool  
052-344

An intensely moisturizing, glistening formula that visibly plumps and softens lips. With cooling menthol for an instant visible increase in lip volume. Clear finish. .5 fl. oz.

## Tint

**Beyond Glow  
Lipcerin  
Hydrating  
Tinted  
Lip Care**  
reg. \$25



**\$18**



Twinkle  
052-750



Flash  
052-909



Glow  
052-087



Flare  
052-901



Sundae



Smoulder

An intensely moisturizing, glistening formula that visibly softens lips and adds a glossy hint of color. With a plumping peptide, moisture-enhancing glycerin and smoothing shea butter. .5 fl. oz.

# shifting shades magic results

Presto change-o! Formula interacts with your lips' pH and transforms to your personalized shade of pink.



**Beyond Glow  
Lipcerin  
Color Shift  
Tinted Lip Care**  
A glistening formula that nourishes dry lips and adapts to your lips for a customized shade. Each, .5 fl. oz. reg. \$25



**Day Shift**  
Lemon/lime shade shifts to a warm pink on lips.  
**840-756**



**Night Shift**  
Black shade shifts to a cool pink on lips.  
**840-760**

**Shop AVON Online**

Click To Shop This Brochure

Dianne Hernandez Ind. Avon Representative





**96%**

Said skin  
feels  
smooth\*

**100%**

Said it thoroughly  
melts away  
makeup\*

## cleansers with benefits

### fruit-infused cleansers

**For All Skin Types**  
**With Kiwi Extract, Vitamins  
B3, B9 and Provitamin B5**

**Beyond Glow Gentle Foaming  
Cleanser with Vitamins and Kiwi**  
A gentle foaming water-based  
cleanser that easily washes off  
makeup and residue without  
stripping your skin, leaving it  
feeling soft and smooth. Skin  
looks brighter and revitalized.  
5 fl. oz. **575-760** reg. \$19

**\$15 \$10.99**

**For All Skin Types**  
**With Mango Butter  
& Papaya Enzyme**

**Beyond Glow Melting Balm  
Cleanser with Enzyme  
and Mango Butter**  
Transforms into a silky oil when  
massaged onto skin. Add water  
for a creamy cleansing milk that  
rinses away makeup, residue  
and even visible blackheads  
and whiteheads, leaving your  
skin feeling soft, smooth and  
refreshed. 5 fl. oz. **575-865**  
reg. \$19

**\$15 \$10.99**

Based on a consumer-perception study of 33 people.



### Cleanse + Hydrate

**For Dry Skin**  
With Hyaluronic Acid  
& Niacinamide

**Beyond Glow Hyaluronic Acid +  
Niacinamide Facial Cleanser**  
5 fl. oz. **627-821**  
reg. \$15

**\$12**



### Cleanse + Exfoliate

**For Oily Skin**  
With Salicylic &  
Citric Acids

**Beyond Glow Salicylic +  
Citric Acids  
Facial Cleanser**  
5 fl. oz. **627-798**  
reg. \$15

**\$12 \$8.99**

**Best of  
K-Beauty**

SPF 30:  
lightweight  
texture for  
everyday wear



SPF 50:  
rich milky  
texture for  
extra care

## sun care + skin care in one

**BROAD-SPECTRUM  
SUN PROTECTION**

**LEAVES NO  
VISIBLE  
WHITE CAST**

**PLUS...**

**HYALURONIC ACID**  
helps skin feel  
plump and supple

**CERAMIDES**  
help protect the  
skin barrier

**CENTELLA ASIATICA**  
helps hydrate  
and soothe skin

**Beyond Glow  
Sun Milk SPF 50**  
With higher SPF. Blends seamlessly.  
Perfect for all skin tones. Formulated  
without fragrance. 1.7 fl. oz.  
929-541 reg. \$38

**\$30**

**Beyond Glow  
Sun Moisturizer SPF 30**  
For face and body. Blends seamlessly.  
Perfect for all skin tones. Formulated  
without fragrance. 1.7 fl. oz.  
927-773 reg. \$38

**\$30**

**Shop AVON Online**

**Click To Shop This Brochure**

Dianne Hernandez Ind. Avon Representative



# BEYOND GLOW

## CENTELLA COLLECTION



### in one use

relieves the look of redness caused by dryness\*

#### **Beyond Glow Centella Redness Relief Serum**

A soothing gel serum with centella asiatica, panthenol and glycerin to help relieve the appearance of redness. 1 fl. oz. 350-399 reg. \$36

**\$26**

\*Based on a consumer perception study of 32 people.

### in 6 days

skin barrier improved†

#### **Beyond Glow Centella Soothing Cream**

Moisturizes and reduces the look of redness caused by dryness. Hypoallergenic and noncomedogenic. 2.7 fl. oz.

350-422 reg. \$36

**\$26**

†Based on a clinical study of 32 people.

### 96%

said skin feels instantly cooled\*\*

#### **Beyond Glow Centella Cooling Toner**

Refreshes and moisturizes irritated skin caused by dryness in seconds. 6.7 fl. oz.

350-403 reg. \$25

**\$20**

\*\*Based on a consumer perception study of 31 people.

# the trending star ingredient: snail mucin complex



Clinically tested to  
improve skin tone  
and brightness

#### **Beyond Glow Snail Mucin Complex + Niacinamide Serum**

Visibly brightens, moisturizes and retexturizes. With snail mucin complex and niacinamide, also known as vitamin B3, which helps even skin tone and strengthen the skin barrier. 3.3 fl. oz. 255-574 reg. \$36

#### **Beyond Glow Snail Mucin Complex + Panthenol Cream**

Moisturizes while it visibly improves texture and elasticity. With snail mucin complex and panthenol, which helps lock in moisture. 3.7 fl. oz. 255-536 reg. \$36

Our cream and serum, formulated with snail mucin complex, moisturize and help visibly brighten skin with a clear, cushiony yet fast-absorbing texture that disappears into the skin while plumping it up with hydration.

 **Shop AVON Online**

**Click To Shop This Brochure**

Dianne Hernandez Ind. Avon Representative



**Beyond Glow Vitamin C  
6% + Ferulic Acid Serum**  
Vitamin C visibly improves  
radiance for glowing skin.  
Ferulic acid, a powerful  
antioxidant, helps protect  
skin from environmental  
stressors. 1 fl. oz.  
255-589 reg. \$38  
**\$30**





**Beyond Glow  
Niacinamide 10%  
Neck Firming  
Cream**

Formulated with shea butter and squalane derived from olive oil, plus panthenol, which helps strengthen the skin's moisture barrier. Contains retinol. Use PM.

3.3 fl. oz.  
052-249 reg. \$38  
**\$30**



## In just 4 weeks:

### NECK FIRMING CREAM

- Crepey skin appears smoothed<sup>†</sup>
- Neck and décolleté lines look improved<sup>†</sup>

<sup>†</sup>Based on a clinical study on 51 people.

### EYE CREAM

- Crow's-feet appear reduced<sup>\*\*</sup>
- Helps under-eye bags look depuffed<sup>\*\*</sup>

<sup>\*\*</sup>Based on a clinical study on 30 people.



**Beyond Glow  
Niacinamide 10%  
Eye Cream**

Formulated with niacinamide and caffeine, plus panthenol, which helps strengthen the skin's moisture barrier. Contains retinol. Use PM.

1 fl. oz.  
052-272 reg. \$30  
**\$23**



**NEW**

**Anew Clean Toner Serum**  
 With niacinamide, hyaluronic acid and raspberry fruit extract. Hydrates and helps visibly smooth skin and boost radiance. Apply before serums and moisturizers.  
 3.4 fl. oz. ~~286-128~~ reg. \$45  
**\$33**

**NEW**

**Anew Clean Fine Mist**  
 On clean skin, spritz evenly all over face. Follow with the balance of your Anew regimen. Can also be used anytime for an instant skin refresh.  
 3.4 fl. oz. ~~286-295~~ reg. \$19  
**\$15**



**Anew Hydra Fusion 1.5% Hyaluronic Acid Serum**  
 With 3 different molecular sizes of HA to optimize delivery to the skin's surface and help plump the look of skin. 1 fl. oz. ~~266-290~~ reg. \$16



**Anew Hydra Fusion Gel Cream**  
 72 hours of long-lasting hydration.  
 1.7 oz. net wt. ~~266-893~~ reg. \$34  
**\$23 \$16.99**

**Shop AVON Online**

Click To Shop This Brochure

Dianne Hernandez Ind. Avon Representative





For dryness, dullness and uneven texture

**aqua bomb jelly cleanser**

Jelly to foam. Amino acids and glycerin-based cleansing agents gently cleanse. 5.41 fl. oz. **894-413** reg. \$35

**\$30**



For dryness, dullness and uneven texture

**the true cream - aqua bomb**

70% increase in hydration levels.\* 1.68 fl. oz. **556-207** reg. \$42

**\$38**

\*Based on a clinical study.



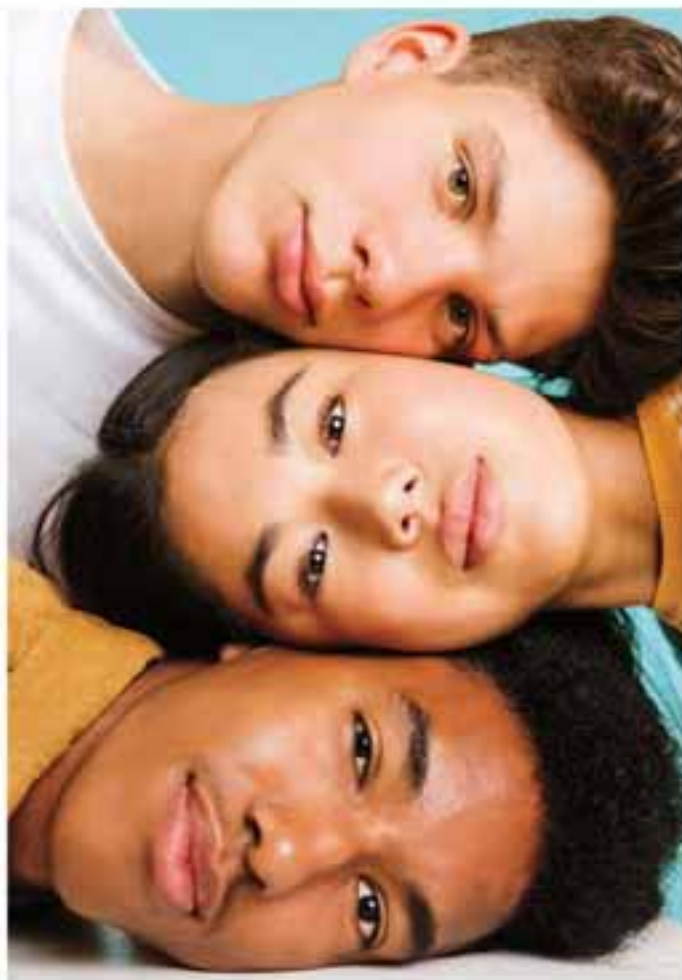
For dryness, loss of elasticity and firmness

**the true cream - moisturizing bomb**

26 hours of long-lasting moisture.\* 1.69 fl. oz. **079-252** reg. \$42

**\$38**

\*Based on a clinical study.



**Solutions  
Anti-Aging Cream**  
Moisturizing  
formula works to  
visibly smooth the  
appearance of fine  
lines and wrinkles.  
1.7 fl. oz. **949-460**  
reg. \$14  
**\$11**



**Solutions Nourishing Cream**  
Adds moisture to dry skin.  
1.7 fl. oz. **399-945** reg. \$14  
**\$11**



**Solutions Dramatic  
Firming Cream**  
Skin looks and feels smoother.  
1.7 fl. oz. **374-657** reg. \$14  
**\$11**



**Solutions Banishing Cream**  
Skin Discoloration Improver  
Visibly improves skin tone.  
1.7 fl. oz. **267-115** reg. \$14  
**\$11**



**Shop AVON Online**

**Click To Shop This Brochure**

Dianne Hernandez Ind. Avon Representative



**5.48** mix or match, any 2 for discount to apply, page 48.



**Rice Water Bright  
Rice Bran  
Gentle Exfoliating  
Cleanser**

Daily scrub with organic rice bran powder, rice bran oil and hydrated silica. 10.1 fl. oz.

376-865  
reg. \$19

~~\$15~~ **\$10.99**



**Rice Water Bright  
Mild Cleansing  
Water**

Removes impurities via the micellar method, so no need to rinse off! 16.9 fl. oz.

288-360 reg. \$18

**\$14**



**Rice Water Bright  
Foaming Cleanser**

Light whipped foam. With rice water and soapwort extract. Skin looks clear and bright. 10.1 fl. oz.

508-093  
reg. \$19

**\$15**



**Rice Water Bright  
Facial Massage  
Cream**

With rice water, vitamins A, B and E, ceramide and minerals. After cleansing, massage into skin 2-3 times a week. 6.7 fl. oz.

450-200  
reg. \$25

**\$20**



**Smaller Size!  
Rice Water Bright  
Foaming Cleanser**

Light whipped foam. With rice water and soapwort extract. Convenient size for your medicine cabinet. 5 fl. oz.

478-479  
reg. \$13

**\$10**

**Rice Water Bright  
Facial Cleansing Lotion**

Helps brighten skin. Gently removes makeup and impurities. 6.7 fl. oz.

720-184 reg. \$14

**\$11**



**Rice Water Bright  
Cleansing  
Facial Wipes**

Great on the go. With rice extract to moisturize while cleansing. Removes eye makeup.

50 sheets. 508-108  
reg. \$13

**\$10**

FRAGRANCE



# wild at heart

The classic collectible Wild Country boot returns, filled with the original cologne for him or a fearlessly authentic scent for her!



BOTH FOR

**\$35.99**

164-759

#### LIMITED EDITION

amber floral

**Wild Country for Her  
Eau de Parfum  
Decanter**

Show your true grit with an unabashed blend of juicy passionfruit, creamy tuberose and soft suede in a collectible boot decanter. 5 fl. oz. 302-357 reg. \$32

**\$25**

#### LIMITED EDITION

fresh aromatic

**Wild Country  
Cologne Decanter**

A favorite for over 50 years! The undeniably untamed spirit of Wild Country, a rugged blend of lavender, coriander seed and sandalwood, in a collectible boot decanter. 5 fl. oz. 301-202 reg. \$32

**\$25**

**Shop AVON Online**

**Click To Shop This Brochure**

Dianne Hernandez Ind. Avon Representative





**Wild Country**  
**Hair & Body Wash**  
 5 fl. oz. 247-895  
 reg. \$10  
**\$8**



**Wild Country**  
**Aftershave Splash**  
 4 fl. oz. 366-432  
 reg. \$18  
**\$15**



**fresh aromatic**  
**Wild Country Cologne**  
 Lavender, coriander seed  
 and sandalwood. 3 fl. oz.  
 086-466 reg. \$27  
**\$21**  
 Packaging may vary.



woody

**Black Suede Eau de Toilette**  
Bergamot, leather and oakmoss.  
3.4 fl. oz. 526-937 reg. \$27

**\$21**



**Black Suede**  
**Hair & Body Wash**  
5 fl. oz. 230-200  
reg. \$10

**\$8**



woody

**Black Suede**  
**The Blend**  
**Eau de Toilette**  
Aged rum-soaked  
casks, smoky leather  
and spicy woods.  
3.4 fl. oz.  
**433-865**  
reg. \$32  
**\$25**

**Shop AVON Online**

Click To Shop This Brochure

Dianne Hernandez Ind. Avon Representative



# BEYOND THE BLUE

FEEL THE STRENGTH AND CAPTIVATING POWER  
OF MESMERIZE AQUA



fresh aromatic

**Mesmerize Aqua**  
Eau de Toilette  
3.4 fl. oz. 888-077 reg. \$34  
**\$27**

Top: Bergamot, Fresh Basil,  
Rhubarb, Apple, Orange  
Mid: Watery Coconut,  
Freesia, Iris, Herbaceous  
Leaves, Clove  
Base: Cedarwood, Vanilla,  
Musk, Amber, Sandalwood,  
Guaic Wood

**A**  
AN AVON  
ICON



fresh aromatic

**Mesmerize Cologne**

Bergamot, cardamom and amber.  
3.4 fl. oz. 674-030 reg. \$34

**\$27**



woody

**Mesmerize Black**  
Eau de Toilette

Pepper, nutmeg and tonka bean.  
3.4 fl. oz. 305-667 reg. \$34

**\$27**



fresh aromatic

**Perceive Cologne**

Citrus, earthy sage and calming  
cedarwood. 3.4 fl. oz. 888-062  
reg. \$34

**\$27**

embrace your desire



soft amber

Imari Eau de Toilette

1.7 fl. oz.

047-038 reg. \$32

\$25

Top: Italian Bergamot, Peach, Iris  
Mid: Tempting Jasmine,  
Moroccan Rose  
Base: Vanilla Orchid,  
Patchouli, Amber



free

Your choice!  
Imari, Far Away or  
Haiku Perfumed  
Skin Softener

with any  
fragrance purchase,  
pages 54-61. \$7 VALUE  
Mix or match scents.  
Limited quantities

**Shop AVON Online**

Click To Shop This Brochure

Dianne Hernandez Ind. Avon Representative





**amber floral**

**Imari Seduction Eau de Toilette**  
 Wild berries, purple orchid and patchouli.  
 1.7 fl. oz. **452-897** reg. \$32  
**\$25**



**woody floral**

**Imari Amor Eau de Parfum**  
 Black currant, orris and warm musk.  
 1.7 fl. oz. **762-573** reg. \$32  
**\$25 \$18.49**



amber floral

**Far Away Moroccan Nights Eau de Parfum**  
Powdery orris, Moroccan mimosa, orange flower and creamy cashmere woods. 1.7 fl. oz. 612-655 reg. \$32

**\$25**



amber floral

**Far Away Eau de Parfum**  
Freesia, jasmine and amber. 1.7 fl. oz. 220-422 reg. \$32

**\$25**



soft amber

**Far Away Gold Eau de Parfum**  
Ylang-ylang, jasmine and vanilla. 1.7 fl. oz. 888-297 reg. \$32

**\$25**



fruity floral

**Far Away Infinity Eau de Parfum**  
Bergamot, jasmine sambac and sandalwood. 1.7 fl. oz. 888-301 reg. \$32

**\$25**



**Shop AVON Online**

**Click To Shop This Brochure**

Dianne Hernandez Ind. Avon Representative



**SPECIAL**

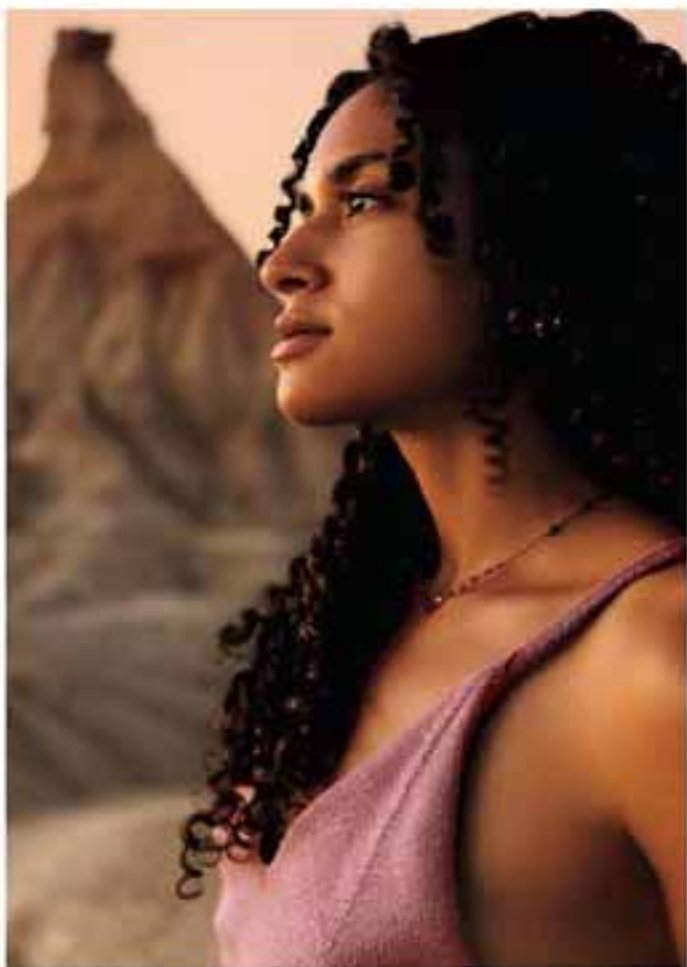
a wanderlust for the exotic



**fruity floral**

**Far Away Bali**  
Eau de Parfum  
1.7 fl. oz. 451-389  
reg. \$32  
**\$25**

Top: Acai Berry,  
Japanese Plum,  
Sparkling Grapefruit  
Mid: Water Lily,  
Salted Tuberose,  
Honeysuckle  
Base: Sacred Woods,  
Musk, Golden  
Amber



woody floral

**Haiku Sunrise Eau de Parfum**

Coconut water, rhubarb  
and cedarwood.

1.7 fl. oz. 091-500

reg. \$32

**\$25**



fresh green

**Haiku Reflection Eau de Parfum**

Water accord, acacia blossom and  
amberwood. 1.7 fl. oz. 617-657

reg. \$32

**\$25**



fresh green

**Haiku Eau de Parfum**

Japanese yuzu, delicate muguet  
and blonde woods. 1.7 fl. oz.

521-170 reg. \$32

**\$25**



**Shop AVON Online**

Click To Shop This Brochure

Dianne Hernandez Ind. Avon Representative



**SPECIAL**

# a serene garden of pure bliss

fresh green

Haiku Kyoto Flower Eau de Parfum

1.7 fl. oz. 253-677

reg. \$32

**\$25**

Top: **Violet Leaf**, Spicy Pink

Pepper, Dewy Pear, Freesia

Mid: **White Peony**,

Rose, Elegant Tuberose,

Orange Blossom

Base: **Soft Cotton Musk**,

Warm Sandalwood,

Addictive Amber





soft ember  
Rare Pink Sapphire  
Eau de Parfum  
Pink pepper,  
delicate rosebud  
and sensual  
amberwood.  
1.7 fl. oz. 894-457  
reg. \$32  
**\$25**



fruity floral  
Rare Amethyst  
Eau de Parfum  
Plum, violet and  
sandalwood. 1.7 fl. oz.  
933-062  
reg. \$32  
**\$25**



soft floral  
Rare Pearls  
Eau de Parfum  
Magnolia, white pepper and  
rosewood. 1.7 fl. oz.  
389-235  
reg. \$32  
**\$25**



**Shop AVON Online**

Click To Shop This Brochure

Dianne Hernandez Ind. Avon Representative



**SPECIAL**

show off your radiance

FRAGRANCE



soft amber

Rare Gold Eau de Parfum

1.7 fl. oz. 828-767

reg. \$32

**\$25**

Top: Mandarin Zest, Sparkling Bergamot, Violet, Solar Accord  
Mid: Ylang-Ylang, Orange Blossom, Jasmine, Soft Orris  
Base: Golden Amber, Creamy Sandalwood, Opulent Vanilla

**OFFER** Details, page 54.

Unique wooden wick  
design gives a clean,  
even burn.



**LIMITED EDITION**

❖ **LYRD Flowerista  
Wooden Wick Candle**

Wander endlessly  
through the local  
flower market with rows  
and rows of gorgeous  
fragrant bouquets.  
Gives 28 hours of burn  
time. 11 oz. net wt. 4 1/2"  
diam. x 3 1/2" H. Wooden  
wick, glass jar, plant-based  
wax. Assembled in USA.  
828-786 reg. \$30

**\$23**

Top: Bergamot, Orange,  
Eucalyptus

Mid: Orange Blossom,  
Cardamom, Creamy  
Coconut, Water Lily,  
Ylang-Ylang

Base: Warm Vanilla,  
Cedaronid, Caltu, Musk

**Shop AVON Online**

**Click To Shop This Brochure**

Dianne Hernandez Ind. Avon Representative

Keep away from children and pets.



# cherry-picked scents

amber floral

**LYRD Cherry Vetiver  
Eau de Parfum**

Addictive and unforgettable,  
feel the magnetic charm of  
captivating notes. 1.7 fl. oz.  
828-771 reg. \$45

**\$35**

Top: Sweet Cherry,  
Fresh Raspberry, Crisp Pear  
Mid: Violet, Marshmallow,  
Cedarwood  
Base: Vetiver, Amber,  
Fluffy Musk



layers  
redefined.



**amber floral**

**LYRD  
Sultry Orchid  
Travel Spray**

Pink saffron, red  
orchid and warm  
amber.

.3 fl. oz. 612-799

reg. \$19

~~\$15~~ **\$10.99**



**fresh green**

**LYRD Honeysuckle Blossom  
Hair and Body Mist**

Lightweight formula envelops  
you in a soft cocoon of scent  
with notes of apple blossom,  
honeysuckle nectar and  
vanilla orchid. Leaves hair  
with a subtle, healthy-looking  
shine. 3.25 fl. oz. 167-231

reg. \$19

~~\$15~~ **\$10.99**



**amber floral**

**LYRD Vanilla Rose  
Travel Spray**

Dewy roses,  
comforting vanilla  
and cedarwood.

3 fl. oz.

505-128

reg. \$19

~~\$15~~ **\$10.99**

 **Shop AVON Online**

**Click To Shop This Brochure** 

Dianne Hernandez Ind. Avon Representative



**amber floral**

**LYRD Sultry Orchid Eau de Parfum**  
Pink saffron, red orchid and warm amber. 1.7 fl. oz. 892-960 reg. \$45  
~~\$35~~ **\$25.99**



**fresh citrus**

**LYRD Clementine & Poppy Eau de Parfum**  
Clementine, poppy flowers and sheer musk. 1.7 fl. oz. 922-384 reg. \$45  
~~\$35~~ **\$25.99**



**fresh green**

**LYRD Honeysuckle Blossom Eau de Parfum**  
Apple blossom, honeysuckle nectar and vanilla orchid. 1.7 fl. oz. 167-270 reg. \$45  
~~\$35~~ **\$25.99**



**fresh green**

**LYRD Coastal Lotus Eau de Parfum**  
Sparkling mandarin, island gardenia and lotus flower. 1.7 fl. oz. 869-906 reg. \$45  
~~\$35~~ **\$25.99**



**amber floral**

**LYRD Vanilla Rose Eau de Parfum**  
Dewy roses, comforting vanilla and cedarwood. 1.7 fl. oz. 094-020 reg. \$45  
~~\$35~~ **\$25.99**



**fresh green**

**LYRD Pear Blossom & Bamboo Eau de Parfum**  
Lemon zest, dewy bamboo and sweet pear blossom. 1.7 fl. oz. 763-804 reg. \$45  
~~\$35~~ **\$25.99**

love begins with you



soft floral

**Today Eau de Parfum**

Magnolia blossoms, hibiscus petals  
and silk musk. 1.7 fl. oz. **490-855**  
reg. \$40

**\$30 \$22.49**



fruity floral

**Live Out Loud #4U**  
**Eau de Parfum**

Mandarin, peach blossom  
and vanilla. 1.7 fl. oz.  
**735-968** reg. \$40



fruity floral

**Live Out Loud**  
**Eau de Parfum**

Strawberry, mimosa and  
vanilla. 1.7 fl. oz. **142-000**  
reg. \$40



fruity floral

**Live Out Loud Solar Vibes**  
**Eau de Parfum**

Bergamot, coconut water and  
fluffy marshmallow. 1.7 fl. oz.  
**835-822** reg. \$40

**\$30 \$22.49**

**Shop AVON Online**

**Click To Shop This Brochure**

Dianne Hernandez Ind. Avon Representative



## IT'S YOUR LIFE, OWN IT.

**Live Out Loud  
Body Cream**  
Each, 5 fl. oz. reg. \$22  
**\$17 each**

**Retro Sun 047-300**  
**Guilt Free 047-320**  
**U Be U 048-000**

**Live Out Loud  
Body Mist**  
Each, 3.4 fl. oz. reg. \$22  
**\$17 each**

**Retro Sun 047-076**  
**Guilt Free 047-100**  
**U Be U 047-114**

fruity floral  
**Live Out Loud Retro Sun**  
Tropical mango, orange  
flower and rich amber.

fruity floral  
**Live Out Loud Guilt Free**  
Pink dragon fruit, violet leaf  
and creamy musk.

amber floral  
**Live Out Loud U Be U**  
Sweet fig, coconut praline  
and whipped vanilla.





woody

**Avon Moments**  
**Endless Highway Eau de Toilette**  
 Ambrette seed, fresh violet and earthy vetiver. 1.7 fl. oz.  
 623-462 reg. \$36  
**\$28 \$20.99**

**Avon Moments**  
**Endless Highway Body Wash**  
 7.7 fl. oz. 623-500 reg. \$19  
**\$15 \$10.99**



amber floral

**Avon Moments Remember That Night Eau de Toilette**  
 Sparkling grapefruit, opulent jasmine and amber. 1.7 fl. oz.  
 196-662 reg. \$36  
**\$28 \$20.99**



soft amber

**Avon Moments Out On A Limb Eau de Toilette**  
 Spicy cardamom, honeyed mimosa flower and powdery vanilla. 1.7 fl. oz. 196-112 reg. \$36  
**\$28 \$20.99**



fruity floral

**Avon Moments Day Dreamer Eau de Toilette**  
 Quince, dewy iris and cedarwood. 1.7 fl. oz. 196-772 reg. \$36  
**\$28 \$20.99**



**Avon Moments Remember That Night Body Wash**  
 7.7 fl. oz. 196-768 reg. \$19



**Avon Moments Out On A Limb Body Wash**  
 7.7 fl. oz. 196-442 reg. \$19



**Avon Moments Day Dreamer Body Wash**  
 7.7 fl. oz. 196-844 reg. \$19  
**\$15 \$10.99**



**Shop AVON Online**

Click To Shop This Brochure

Dianne Hernandez Ind. Avon Representative





fruity floral

**Avon Classics Prima  
Eau de Parfum**

Plum, intoxicating rose and  
white patchouli. 1.7 fl. oz.  
081-187 reg. \$20

**\$16**



soft floral

**Avon Classics  
Dreamlife Cologne**

Mimosa flower, rose and amber.  
1.7 fl. oz. 236-227  
reg. \$20

**\$16**



woody floral

**Avon Classics  
Night Magic Cologne**

Neroli, jasmine and musk  
1.7 fl. oz. 439-495  
reg. \$20

**\$16**



soft floral

**Avon Classics Candid Cologne**

Bergamot, tuberose and patchouli.  
1.7 fl. oz. 247-929  
reg. \$20

**\$16**



soft floral

**Avon Classics Soft Musk Cologne**

Peach blossom, blonde woods and  
sheer musk. 1.7 fl. oz. 787-790  
reg. \$20

**\$16**



soft floral

**Avon Classics  
Sweet Honesty Cologne**

Lily of the valley, rose and cedarwood.  
1.7 fl. oz. 901-861 reg. \$20

**\$16**



soft floral

**Avon Classics Timeless Cologne**

Cardamom, jasmine and  
patchouli. 1.7 fl. oz. 369-230  
reg. \$20

**\$16**



soft floral

**Avon Classics Odyssey Cologne**

Tuberose, ylang-ylang and  
oakmoss. 1.7 fl. oz. 900-391  
reg. \$20

**\$16**



fresh green

**Free O<sub>2</sub> Eau de Toilette**  
White peach tea, honeysuckle  
and musk. 1.7 fl. oz. 490-840  
reg. \$20

**\$16**

**ANY TWO FOR \$21**

mix or match, any two for discount to apply,  
page 69.

# scented softness

**Perfumed Skin Softener**  
Moisturizing formula leaves skin soft and  
scented. Each, 5 fl. oz. reg. \$7  
**\$5 each**

AvonClassics Candid 739-160  
AvonClassics Odyssey 739-712  
Avon 220-384  
Retail 738-694

AvonClassics Timeless 739-355  
AvonClassics Sweet Honesty 740-246  
AvonClassics Night Magic 738-766  
For A way 049-246



**Shop AVON Online**

**Click To Shop This Brochure**

Dianne Hernandez Ind. Avon Representative





**Haiku Body Lotion**  
6.7 fl. oz. 447-820  
reg. \$15  
~~\$11~~ **\$7.99**



**Haiku Hand Cream**  
2.5 fl. oz. 574-998  
reg. \$9  
**\$7**



**Far Away Body Lotion**  
6.7 fl. oz. 082-881  
reg. \$15  
~~\$11~~ **\$7.99**



**Far Away Hand Cream**  
2.5 fl. oz. 369-169  
reg. \$9  
**\$7**



**Rare Pearls Body Lotion**  
6.7 fl. oz. 082-915  
reg. \$15  
~~\$11~~ **\$7.99**



**Rare Pearls Hand Cream**  
2.5 fl. oz. 575-019  
reg. \$9  
**\$7**

# BATH & BODY



**Shop AVON Online**

**Click To Shop This Brochure**

Dianne Hernandez Ind. Avon Representative



**SKIN SO SOFT  
ORIGINAL  
SET**

Original  
Bonus-Size  
Shower Gel  
33.8 fl. oz.  
\$19 value

Original  
Body Lotion  
11.8 fl. oz.  
\$17 value

Original  
Replenishing  
Hand Cream  
3.4 fl. oz.  
\$8 value

**ALL 3  
FOR  
\$22.99**

\$44 VALUE  
146-719



**SKIN SO SOFT  
SOFT & SENSUAL  
SET**

Soft & Sensual  
Bonus-Size  
Shower Gel  
33.8 fl. oz.  
\$19 value

Soft & Sensual  
Body Lotion  
11.8 fl. oz.  
\$17 value

Soft & Sensual  
Gelled Body Oil  
6.76 fl. oz.  
\$17 value

**ALL 3  
FOR  
\$27.99**

\$53 VALUE  
148-597



# THE BEAUTY OF *Jojoba Oil*



This plant extract mimics skin's natural oils, with vitamins and minerals essential to keep skin soft and smooth.



## ORIGINAL

### Bath Oil

48 hours of moisturization.  
Fresh herbal scent.  
16.9 fl. oz. **439-040** reg. \$26

**\$20**

### Replenishing Hand Cream

3.4 fl. oz. **776-633**  
reg. \$8

**\$6**

### Beauty Bar Soap

3.17 oz. net wt. **543-110**  
reg. \$5

**\$4**

### Body Lotion

48 hours of moisturization.  
11.8 fl. oz. **761-634**  
reg. \$17

**\$13**

### Bonus-Size Body Lotion

33.8 fl. oz. **903-682**  
reg. \$26

**\$20**

### Bonus-Size Shower Gel

Cleanses and hydrates.  
33.8 fl. oz. **433-444**  
reg. \$19

**\$15**

### Shower Gel

5 fl. oz. **914-580**  
reg. \$9

**\$6**



**Shop AVON Online**

**Click To Shop This Brochure**

Dianne Hernandez Ind. Avon Representative



**Gelled Body Oil**  
Dries to a silky  
finish. 6.76 fl. oz.  
939-500 reg. \$17

**\$13**

**Bath Oil Spray**  
48 hours of  
moisturization.  
Locks in hydration.  
5 fl. oz. 174-938  
reg. \$19

**\$14**

**Bonus-Size Bath Oil**  
48 hours of moisturization.  
Use during or after bath or  
shower. 24.6 fl. oz.  
663-480 reg. \$35

**\$27**

**99%** AGREED\*

- SKIN FELT DEEPLY MOISTURIZED
- SKIN FELT SOFTER AND SMOOTHER
- SKIN LOOKED REPLENISHED



\*Based on a consumer perception study of 32 participants who used Bath Oil (both 36.9 fl. oz. and 24.6 fl. oz.) and Bath Oil Spray.

# THE BEAUTY OF *Argan Oil*



So precious, it's called "liquid gold."  
Packed with vitamin E, it helps to visibly restore  
skin's luster and keep it irresistibly soft.



**99%** AGREED\*

- SKIN LOOKED VIBRANT, NATURALLY RADIANT AND MORE SUPPLE
- SKIN FELT HEALTHIER, MORE NOURISHED AND LESS AGITATED

\*Based on a consumer-perception study of 52 participants

**Shop AVON Online**

**Click To Shop This Brochure**

Dianne Hernandez Ind. Avon Representative





#### SOFT & SENSUAL

##### Gelled Body Oil

Dries to a silky finish. 6.76 fl. oz. 908-244 reg. \$17

**\$13**

##### Bonus-Size Bath Oil

48 hours of moisturization. Hydrates during or after bath or shower. 25 fl. oz.

562-801 reg. \$35

**\$27**

##### Bath Oil

48 hours of moisturization. Spicy floral scent. 16.9 fl. oz. 504-614 reg. \$26

**\$20**

##### Shower Gel

5 fl. oz. 914-710 reg. \$9

**\$6**

##### Bonus-Size Shower Gel

33.8 fl. oz. 018-142 reg. \$19

**\$15**

##### Body Lotion

11.8 fl. oz. 400-720 reg. \$17

**\$13**

##### Replenishing Hand Cream

3.4 fl. oz. 779-924 reg. \$8

**\$6**

##### Bonus-Size Body Lotion

33.8 fl. oz. 746-210 reg. \$26

**\$20**

##### Beauty Bar Soap

3.17 oz. net wt. 543-215 reg. \$5

**\$4**



**Calming Lavender Body & Bath Oil**  
 Antioxidant-infused with a luxe blend of lavender and chamomile essential oils, plus jasmine extract. Skin feels so soft and supple. 11.8 fl. oz. 511-354 reg. \$32  
**\$25 \$18.49**



**Comforting Shea Bath Oil**  
 With shea butter and oil. Vanilla, sandalwood and musk scent. 16.9 fl. oz. 015-071 reg. \$24  
**\$18 \$13.49**



**Radiant Moisture Replenishing Hand Cream**  
 3.4 fl. oz. 776-561 reg. \$8  
**\$6 \$4.49**



**Skin So Soft Facial Bar Retinol & Vitamin C**  
 Helps visibly even tone, brighten and enhance skin clarity. 3.1 oz. net wt. 364-607 reg. \$6  
**\$5**



**Fresh & Smooth Meadowfoam Facial Hair Removal Cream**  
 Dermatologically tested. 1 fl. oz. 562-543 reg. \$13  
**\$10**



**Skin So Soft Facial Bar Collagen & Goat Milk**  
 Deeply hydrates. 3.1 oz. net wt. 364-626 reg. \$6  
**\$5**



**Fresh & Smooth Body Hair Removal Cream**  
 4.2 fl. oz. 562-467 reg. \$10  
**\$8**



**Shop AVON Online**

**Click To Shop This Brochure**

Dianne Hernandez Ind. Avon Representative





THE BEAUTY OF  
*Argan Oil*  
plus Illuminator Technology

Packed with vitamin E, argan oil helps keep skin irresistibly soft. And our Illuminator Technology helps keep skin looking radiant.

**Radiant Moisture Bonus-Size Bath Oil**  
Hydrates during or after bath or shower.  
24.6 fl. oz. 059-497 reg. \$35

**\$27**

**SKIN SO SOFT  
PURE NATURE  
HAIR COLLECTION**  
Sustainable\* packaging  
Eucalyptus mint scent



**Nourishing Shampoo**  
With panthenol, known to help moisturize, and citric acid, known to help balance the pH level of the scalp. 12 fl. oz. **290-074** reg. \$23  
**\$18 \$13.49**

**Nourishing Conditioner**  
With panthenol, known to help moisturize and visibly improve elasticity. Hair looks smooth, healthy and shiny. 12 fl. oz. **290-089** reg. \$23  
**\$18 \$13.49**

**Intense Nourishing Hair Mask**  
With panthenol, known to help moisturize and visibly improve elasticity. Hair looks smoother and stronger. 8 fl. oz. **290-131** reg. \$23  
**\$18 \$13.49**

\*Shampoo and Conditioner bottles: 95% post-consumer recycled material, excluding cap. Hair Mask tube: 55% post-consumer recycled material, excluding cap.

**Pure Nature Body Revitalizing Shower Gel**  
Richly lathering gel. 12 fl. oz. **415-170** reg. \$22  
**\$17 \$12.49**



Bottle made from 95% post-consumer recycled material, excluding cap.

**Pure Nature Body Revitalizing In-Shower Body Lotion**  
Hydrating and softening lotion. Apply onto wet skin after shower or bath. 8 fl. oz. **633-857** reg. \$22  
**\$17 \$12.49**



Tube made from 55% post-consumer recycled material, excluding cap.

**Shop AVON Online**

**Click To Shop This Brochure**

Dianne Hernandez Ind. Avon Representative





**Senses Bubble Bath**  
24 baths in every bottle.  
Each, 24 fl. oz. reg. \$16  
**\$13 each**



Cherry Blossom  
929-211



Vanilla Cream  
875-688



Cucumber Melon  
688-950



Sensitive Skin  
875-400



Lavender Garden  
381-799

**Senses Shower Gel**  
Each, 5 fl. oz. reg. \$8  
**\$6 each**



Blushing Cherry Blossom  
921-847



Silky Vanilla  
248-440



Fresh Cucumber & Melon  
400-716



Juicy Pomegranate & Mango  
248-155

**BUY BUBBLE BATH, GET SHOWER GEL 99¢**

mix or match, page 81.

# Skin So Soft +

Advanced bath and body collections with luxurious oils and infused with high-performance skin care ingredients for powerful results.



## Shower Gel

Hydrating and refreshing, it contains nourishing soybean and pomegranate-seed oils for the look of soft, silky-smooth and radiant skin. Light floral scent. 8 fl. oz.

**082-680**

reg. \$23

**\$15**

## Body Lotion

With squalane, panthenol, niacinamide and sea buckthorn oil, it helps visibly boost elasticity, improve skin tone and lock in lasting moisture—leaving your skin looking soft, smooth, plump and radiant. 48-hour hydration! Light floral scent. 11.8 fl. oz.

**084-129**

reg. \$28

**\$16**

**Shop AVON Online**

**Click To Shop This Brochure**

Dianne Hernandez Ind. Avon Representative



# Firm Up

## WITH COLLAGEN PEPTIDE

Introducing the latest collection, formulated to help visibly plump skin and restore firmness and resilience while deeply hydrating.

### COLLAGEN AMINO ACIDS

Help improve skin elasticity and maintain firmness.

### ALOE LEAF EXTRACT

Helps soothe and hydrate skin.

### **Bath & Body Oil**

48-hour hydration! With squalane to help keep skin looking soft and supple, plus soybean and sea buckthorn oils to help visibly boost radiance and even tone for a healthy-looking, luminous glow. Apply during or after your bath or shower. Light floral scent. 11.8 fl. oz. 087-329

reg. \$38

**\$22**



Skin So Soft +  
**HYDROPLENISH**  
with hyaluronic acid

**Body Lotion**  
48-hour moisturization. Replenishing body lotion with hyaluronic acid and panthenol to help boost hydration and visibly restore skin's natural glow. Soft floral scent. 11.8 fl. oz. **764-160**  
reg. \$28

**\$16**

**Shower Gel**  
With sunflower seed oil and cupuacu butter to soften and smooth while it helps to boost hydration and restore skin's natural glow. Soft floral scent. 8 fl. oz. **763-967** reg. \$23

**\$15**

**Body Scrub**  
Exfoliating body scrub with sunflower seed oil and cupuacu butter to soften and smooth while it helps to boost hydration and restore skin's natural glow. Soft floral scent. 8.2 oz. net wt. **763-857**  
reg. \$25

**\$15**

**Bath & Body Oil**  
48-hour moisturization. With hyaluronic acid, sunflower seed oil and cupuacu butter to boost hydration and help skin look dewy with a natural glow. Soft floral scent. 11.8 fl. oz. **763-971**  
reg. \$38

**\$22**



 **Shop AVON Online**

**Click To Shop This Brochure** 

Dianne Hernandez Ind. Avon Representative



## Skin So Soft + RADIANT RENEW with retinol

### Shower Gel

Infused with argan oil, an abundant source of fatty acids, antioxidants and vitamin E, to help skin feel softer, smoother and rejuvenated. Fresh green floral scent. 8 fl. oz. **051-458** reg. \$23

**\$15**

### Body Lotion

48-hour moisturization! With intensely hydrating hyaluronic acid. Skin looks softer, smoother, plumper and more radiant. Fresh green floral scent. 11.8 fl. oz. **051-974** reg. \$28

**\$16**

### Bath & Body Oil

48-hour hydration! With squalane to help boost moisturization. Skin looks smooth with a radiant glow. Apply during or after a bath or shower. Fresh green floral scent. 11.8 fl. oz. **051-955** reg. \$38

**\$22**

**Moisture Therapy  
Intensive Healing & Repair  
All Over Rescue Balm Stick**  
24-hour moisturization in a convenient,  
mess-free, glide-on stick. Fragrance-free.  
Apply anywhere on body,  
face and even lips.  
Great on the go.  
470-004  
reg. \$20  
**\$15**



**Moisture Therapy  
Intensive Healing & Repair  
All Over Rescue Balm**  
24-hour moisturization for extra-dry skin. With  
soothing and smoothing avocado oil and shea  
butter. Apply anywhere on body, face and even  
lips to seal in moisture. Fragrance-free.  
2.5 fl. oz. 419-840 reg. \$15  
**\$12**

**Moisture Therapy  
Intensive Healing & Repair  
Extra Strength Cream**  
24-hour moisturization.  
Fragrance-free  
5.3 oz. net wt.  
224-982  
reg. \$10  
**\$7.50**



**Moisture Therapy  
Intensive Healing & Repair  
Hand Cream**  
For extremely dry skin.  
Moisturizes through hand  
washings. Fragrance-free.  
4.2 fl. oz. 845-982  
reg. \$8  
**\$6**



**Moisture Therapy  
Balance + Soothe  
Body Wash**  
Softens as it  
gently cleanses.  
13.2 fl. oz.  
438-078  
reg. \$23  
**\$18 \$9.99**



**FREE**

with any \$25 purchase,  
page 86 only.

**Moisture Therapy  
Intensive Healing & Repair  
Moisturizing Lip Treatment Stick**  
14 oz. net wt. 562-869  
reg. \$4  
**\$3**



**Moisture Therapy  
Balance + Soothe  
Body Lotion**  
Skin looks softer  
and healthier.  
13.2 fl. oz.  
438-082  
reg. \$25  
**\$20 \$9.99**



**Shop AVON Online**

Click To Shop This Brochure

Dianne Hernandez Ind. Avon Representative



# need more? get more... with bonus-size lotions.

**Moisture Therapy**  
**Bonus-Size Body Lotion**  
Each, 33.8 fl. oz. reg. \$26  
**\$20 each**

**Intensive Healing & Repair**  
**Bonus-Size Body Lotion**  
72-hour moisture for  
extra-dry skin.  
Fragrance-free.  
**487-283**

**Daily Skin Defense**  
**Bonus-Size Body Lotion**  
Helps restore moisture  
to everyday dry skin.  
**725-793**

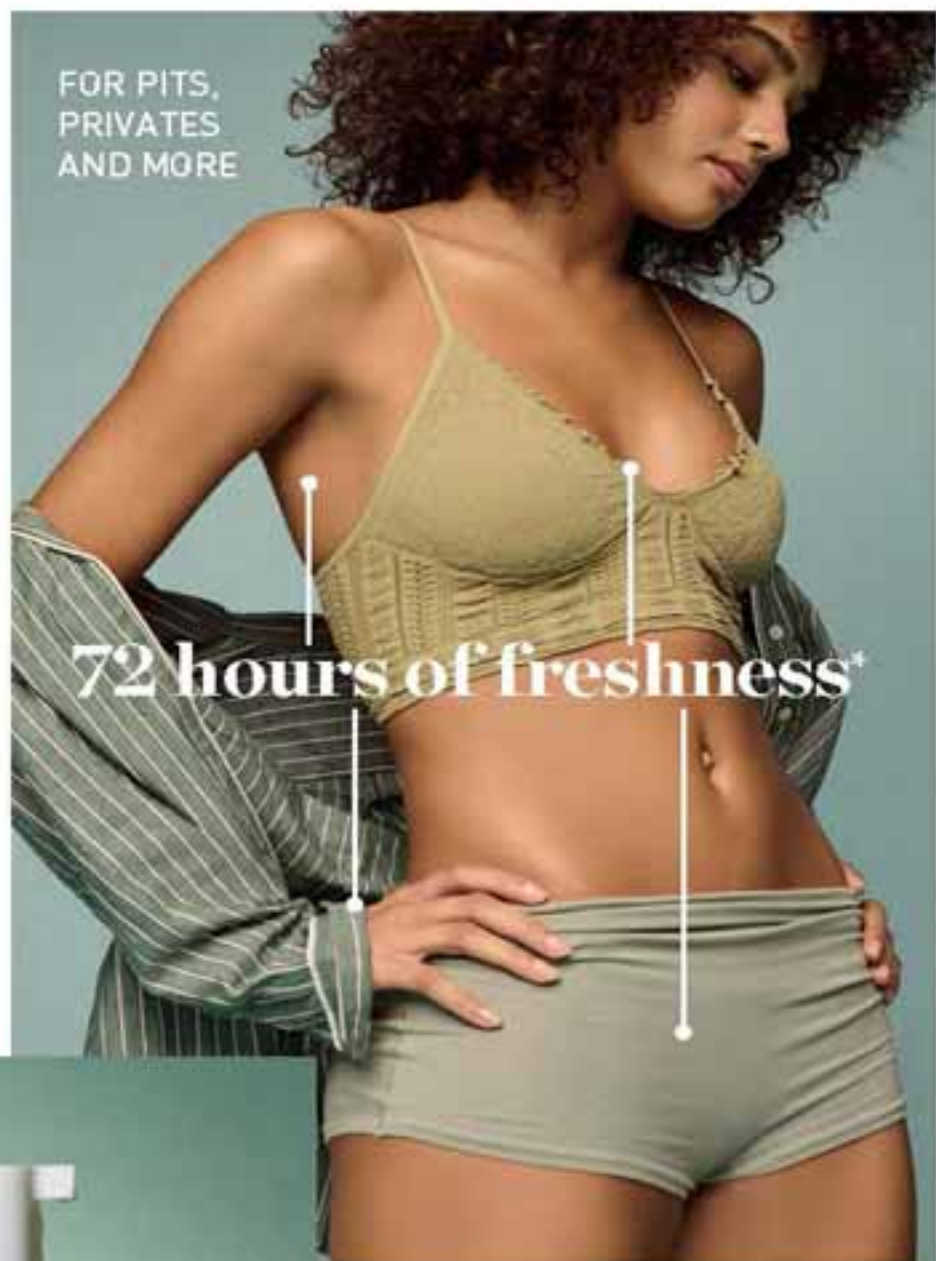
**Calming Relief**  
**Bonus-Size Body Lotion**  
Soothes and relieves  
dry, itchy skin.  
Fragrance-free.  
**639-802**



**ANY TWO FOR \$26.98** mix or match, any two for discount to apply, page 87. C9 | 87

FOR PITS,  
PRIVATES  
AND MORE

Introducing the  
**Fem Bliss Collection.**  
Empowering women  
to feel freshly clean,  
comfortable, cared  
for and confident in  
their own skin.  
Pure bliss for  
every part of you.



72 hours of freshness\*



**new**

**Fem Bliss Full Body Cream Deodorant**

With a refreshing cucumber scent, this lightweight, non-greasy cream dries clear and helps eliminate odors. Contains panthenol and vitamin E. Formulated without aluminum, dyes, parabens and phthalates. 3 fl. oz. **649-010**  
reg. \$24

**\$18**

**Fem Bliss Foaming Feminine Wash**

Aloe-based, pH-balanced, clean moisturizing body wash helps eliminate odors. Formulated without BPA, parabens, phthalates, synthetic dyes and fragrances, alcohol and animal-derived ingredients. 5 fl. oz. **648-550** reg. \$24

**\$18**

\*With use of Fem Bliss Full Body Cream Deodorant.



**Shop AVON Online**

**Click To Shop This Brochure**

Dianne Hernandez Ind. Avon Representative



## Hit Pause.

Look and feel your best through perimenopause and menopause. A cooling rose-scented collection formulated with Superfood Amla Berry Extract.

**new**

**Hit Pause Neck & Chest Serum**  
Crepey skin on your neck and décolleté? This hydrating and smoothing solution helps diminish dryness and sagging. With rose water, hyaluronic acid and niacinamide. Skin looks firmer, more toned and more radiant over time. Cooling and massaging roller applicator helps optimize absorption.  
1.7 fl. oz. 646-910  
reg. \$30  
**\$23**



**Hit Pause All Over Cooling Mist**  
Instant cooling refreshment for face or body to energize and hydrate. Spray anytime.  
3.4 fl. oz. 264-336  
reg. \$25  
**\$20**

**Hit Pause Hydrating Body Cream**  
Lightweight, fast-absorbing moisturizer with panthenol to help soothe skin and combat dryness, boost elasticity and reduce the appearance of crepiness.  
6.7 fl. oz. 263-990 reg. \$22  
**\$17**

**Hit Pause Refreshing Wipes**  
Pre-moistened towelettes remove sweat and dirt from face, hands and body. No water or rinsing needed. Safe for external down-there places, armpits or anywhere you need to refresh. Rose scent. 30 wipes.  
264-264 reg. \$13  
**\$10**

Organist Coconut + Peptides | *curl-defining*

# dry, curly, coily hair?

hydrate, detangle and smooth with coconut

## All-in-One Leave-in Conditioner

Lightweight spray instantly helps detangle. Helps control frizz and flyaways. Helps enhance silky shine and manageability. Helps hair feel less prone to breakage. Curls look defined. For all hair types. 5 fl. oz.

756-385 reg. \$21

\$16

## Deep Conditioning Hair Mask

Nutrient-rich formula helps visibly reduce breakage, tame frizz, strengthen strands and add luster. Curls look defined and bouncy. Hair looks smoother, shinier, healthier. 7.7 fl. oz.

756-586 reg. \$21

\$16



\*Results achieved using Organist with Coconut + Peptides All-in-One Leave-in Conditioner.



 **Shop AVON Online**  
Click To Shop This Brochure   
Dianne Hernandez Ind. Avon Representative

Organist **Algae** | *replenishing*

# frizzies and split ends?

quench dry, frizzy strands and help mend split ends with kelp and seaweed complex

### Moisture Shampoo

Lightweight jelly formula deeply hydrates. Helps tame frizz and visibly reduce split ends for a polished look. Refreshes scalp. 16.9 fl. oz. **286-410** reg. \$22

**\$17**

### Deep Moisture Hair Mask

Deep moisture and frizz control. Perfect for dry hair. Intensely hydrates with hyaluronic acid. Infused with hair-nourishing Hydro Green Pearls that dissolve on contact. 6.7 fl. oz. **286-462** reg. \$21

**\$16**

### Jelly Body Wash

Hydro Green Pearls dissolve on contact to help hydrate as it cleanses. Softens and refreshes the look of dry, dull skin for a healthy-looking glow. 16.9 fl. oz. **286-520** reg. \$22

**\$17**

### Whipped Body Cream

Helps deliver intense, lasting moisture for soft skin and a youthful-looking glow. Enriched with 10% squalane to help support skin's moisture barrier and visibly boost elasticity. 4.5 fl. oz. **286-591** reg. \$22

**\$17**



**Rosemary Mint  
Hair Strengthening Oil**

2-in-1 daily-use oil for hair and scalp. With essential oils, 99% derived from plants, plus biotin. Rosemary and mint blend. Hair feels fortified, nourished and refreshed. 2 fl. oz. 542-845 reg. \$25

~~\$20~~ **\$17**

**Scalp Strengthening Tonic**

With rosemary, mint, biotin, caffeine. Scalp feels revitalized, cooled. Hair looks thicker, stronger. 5 fl. oz. 544-427 reg. \$25

~~\$20~~ **\$17**

**Gua Sha Scalp Massager**

For scalp, neck and body. Helps improve circulation for visibly strong, healthy hair. 100% wood. 542-960 reg. \$25

~~\$20~~ **\$17**



**Rosemary Mint with Biotin Dry Shampoo**

Easy-to-use, mess-free puff applicator and fast-acting formula with a blend of rosemary, mint and biotin absorbs excess oil on scalp and at the roots. Hair looks clean and fresh between washes. Perfect on the go! Formulated without sulfates and parabens. 0.28 fl. oz. 078-787 reg. \$25

~~\$20~~

**\$17**



**Rosemary Mint  
Body Wash**

Formulated with AHA/BHA/PHA and panthenol. 16.9 fl. oz. 544-446 reg. \$22

**\$17**



**Shop AVON Online**

**Click To Shop This Brochure**

Dianne Hernandez Ind. Avon Representative



**BUY ONE GET**

Organist **Rosemary + Mint** | *strengthening*

# fine strands? scalp needs soothing?

strands feel stronger and fuller,  
scalp feels refreshed  
with rosemary



**Strengthening Shampoo + Conditioner**  
 With rosemary and biotin, to help to keep your scalp and hair looking healthy. Refreshing, cooling peppermint helps your scalp feel revitalized.  
 16.9 fl. oz.  
**Shampoo 542-974**  
**Conditioner 542-993**  
 reg. \$22  
**\$17 each**

**ONE HALF PRICE** mix or match, pages 92-93.

Organist Apple Cider Vinegar | *clarifying*

# oily scalp and hair?

minimize oil and refresh scalp  
for healthy-looking hair

## Clarifying Shampoo

For oily hair. Helps clarify and nourish scalp and hair for healthy-looking shine as it cleanses. 16.9 fl. oz.

482-650 reg. \$22

~~\$17~~ \$12.49



## Organist Botanical Castile Soap Lavender Oil & Vitamin E

With ingredients to help skin feel refreshed and promote a relaxing experience. Calming lavender scent. 16.2 fl. oz.

048-398 reg. \$19

**\$15**



## Organist Botanical Castile Soap Rose Water & Hyaluronic Acid

Low-pH formula helps replenish soothing moisture. Crisp floral scent. 16.2 fl. oz.

348-100 reg. \$19

**\$15**



**Shop AVON Online**

Click To Shop This Brochure

Dianne Hernandez Ind. Avon Representative



Organist Rice Water | *nourishing***dry, damaged hair?**

add moisture for healthy-looking shine

**Damage Care Shampoo**

With biotin, ceramide, protein and 17 amino acids to deeply nourish each strand, restoring strength and resilience. Enriching rice water helps transform dry hair into a silky mane. 16.9 fl. oz. **381-803** reg. \$22

**\$17****Damage Care Treatment**

Perfect for hair in need of hydration and repair. Biotin, protein and 17 amino acids help nourish each strand from within. Hyaluronic acid and collagen help smooth hair for resilience and softness. 6.7 fl. oz. **381-860**

reg. \$22

**\$17****Moisture Replenish Hair Mist**

Two-layer mist: a hydrating essence plus five plant oils, including jojoba and argan oils, for deep moisturization. Rice water, biotin, ceramide, protein and amino acids help revitalize, nourish and soften dry, damaged hair.

Shake well before use.

Use on damp or dry hair.

2.7 fl. oz.

**381-985** reg. \$25**\$20**

jasmine  
and  
freesia  
scent





# Super-easy hair removal for sensitive skin

Introducing  
**Schick Hydro Silk**



## EASILY REMOVE HAIR FROM THE ROOT

### ◆ Targeted Waxing Strips

Perfectly sized for small or hard-to-reach places on the face, like upper lip and eyebrows, or the pubic and bikini area. Ready to use—no warming or rubbing needed. See longer-lasting results.\* With seaweed extract. Dermatologist-tested. For sensitive skin, making it perfect for use as a bikini wax, eyebrow wax, upper lip wax and more. Includes:

- 20 small and 20 medium pre-filled wax strips
- 4 finishing wipes with almond oil

609-102 reg. \$15

**\$12 \$9.99**

**Shop AVON Online**

Click To Shop This Brochure

Dianne Hernandez Ind. Avon Representative



## FOR WOW BROWS

### ◆ Sugar Wax Wand

Warm sugar wax. Water-rinsable. Precision tip for sideburns, upper lip and eyebrows. With calendula oil. Warms in hot water in minutes. Dermatologist-tested. For sensitive skin. Includes:

- 4 post-wax soothing serum sachets
- 0.7 oz. sugar wax wand
- 1 precision stick
- 20 reusable strips

614-146

reg. \$15

**\$12**



## PRECISION ROLL-ON APPLICATOR

### ◆ Sugar Wax Roller

Glides on easily. See longer-lasting results.\* The sugar wax kit with calendula oil is gentle on sensitive skin areas, making it an ideal body-hair and pubic-hair wax. Water-rinsable. Dermatologist-tested.

Includes:

- 2 post-wax soothing serum sachets
- 5.1 oz. sugar wax roller
- 10 reusable strips

608-986

reg. \$15

**\$12**



## DESIGNED FOR A CLOSE, COMFORTABLE SHAVE WITHOUT IRRITATION

### ◆ Ultra Sensitive 5-Blade Disposable Razor

Five Curve Sensing® blades.

With Hydra-Boost Serum®, aloe and chamomile.

Hydrates skin up to two hours after shaving.

Dermatologist-tested.

Skin-protection coating on blades and skin guards.

Curved handle fits in hand and allows the razor head to stay elevated, keeping the razor dry when not in use. Includes:

- 2 women's disposable razors

608-880 reg. \$11

**\$9**

Each razor lasts up to 32 days\* and can be conveniently recycled using the free mail-back program from Schick ([www.edgewellrecycling.com](http://www.edgewellrecycling.com)).

\*Based on shaving 2x/week.



## REMOVE HAIR WHILE EXFOLIATING

### ◆ 2-in-1 Hair Removal Cream

Helps to minimize ingrown hairs. Suitable for sensitive skin. Safe for use on legs, arms and underarms, and as a bikini hair removal cream for pubic area. Fresh, clean scent. With vitamin E.

Includes:

- 1 spatula
- 8.4 oz. body hair removal cream

609-356 reg. \$15

**\$12**



**Himalaya Pink Salt  
Intensive Whitening  
Toothpaste  
(with Fluoride)**

Clinically tested to whiten teeth in one week. 24-hour stain resistance. With sodium fluoride to help strengthen enamel. Pink paste. Spearmint flavor. 4.2 oz. net wt. **382-283** reg. \$17

**\$12.99**



**Himalaya Pink Salt  
Intensive Whitening  
Toothbrush  
(Large)**

Bristles are infused with Himalayan pink salt for effective cleansing and a brightening effect. Large brush. High-tension bristles penetrate narrow gaps. **035-812** reg. \$9

**\$6.59**



**Himalaya Pink Salt  
Purple Color  
Corrector + Intensive  
Whitening Toothpaste  
(with Fluoride)**

Purple toothpaste with advanced color-correcting. Clinically tested to reduce yellow stains on teeth after one use. Visibly whiter teeth in one week. 24-hour stain resistance. Vanilla mint flavor. Formulated without parabens, gluten, phthalates and triclosan. 3.5 oz. net wt. **383-624** reg. \$17

**\$12.99**



**Himalaya Pink Salt  
Purple Whitening  
Toothbrush**

Purple color fades as bristles wear, reminding you to replace. Clinically tested to remove 4X more interdental plaque.\* Bristles with 2X the elasticity clean narrow gaps between teeth and gum line. **383-165** reg. \$9

**\$6.59**

**\$6.59**

\*Compared to LG H&H regular toothbrush with soft bristles.



**Best of  
K-Beauty**

**Himalaya Pink Salt  
Whitening Natural Salt  
Toothpaste  
(Fluoride-Free)**

Helps reduce plaque, whiten teeth and freshen breath. Contains essential minerals and bifidus essences. Pink gel. Spearmint flavor. Formulated without parabens, gluten and triclosan. 3.9 oz. net wt. **943-112** reg. \$12

**\$8.79**



**Himalaya Pink Salt  
Whitening Toothbrush  
(Medium)**

Bristles are infused with Himalayan pink salt for effective cleansing and a gentle brightening effect. Medium-sized brush. High-tension bristles penetrate narrow gaps. **729-359** reg. \$8

**\$5.99**

**\$5.99**



**Shop AVON Online**

**Click To Shop This Brochure**

Dianne Hernandez Ind. Avon Representative



# GET LOST, ROOTS!

Touch up gray in seconds and extend time between salon visits. Instantly covers roots and even bare spots for a fuller look.

## Root Touch-Up

With scalp-nourishing black bean and ginseng. Built-in mirror. Travel-ready.

Each .25 oz. net wt. reg. \$20

**\$12 each**



Reddish Brown  
243-627



Light Brown  
244-642



Dark Brown  
245-215



Black  
245-251



Results are simulated

SPONGE TIP APPLICATOR

MIRROR



# BRUSH UP ON STYLING

Avon  
Compact Hairbrush  
504-743 reg. \$12  
**\$9 ~~\$6.49~~**

Avon  
Detangling Comb  
504-820 reg. \$9  
**\$6.50 ~~\$4.49~~**

Avon  
Blow-Dry  
Round Hairbrush  
504-800 reg. \$20  
**\$16 ~~\$11.99~~**

Avon  
Detangling Hairbrush  
504-815 reg. \$14  
**\$11 ~~\$7.99~~**



Senses  
Lip Balm  
Strawberry  
.14 oz. net wt.  
554-219  
reg. \$4  
**\$3**



Senses  
Lip Balm  
Cherry  
.14 oz. net wt.  
554-223  
reg. \$4  
**\$3**



Avon Shower Brush  
Long handle to reach down back. Brush helps remove dead skin cells as it cleanses. Back of brush features massage nubs. Non-slip, comfort handle has a convenient hanging loop.  
904-727 reg. \$11  
**\$8.50 ~~\$5.99~~**

Exfoliation Mitt  
Microfiber jacquard, with nylon/spandex cuff. 439-734 reg. \$14

 **Shop AVON Online**

**Click To Shop This Brochure** 

Dianne Hernandez Ind. Avon Representative



**Perfumed Liquid Deodorant**

Soft floral scent.  
Aluminum-free.  
Fast-drying.  
Easy fingertip application.  
2 fl. oz. **889-915**  
reg. \$10  
**\$7.50**



**Irani**  
464-166

**Relevo**  
800-060

**Odyssey**  
740-250

**Sweet Honey**  
489-021

**Timeless**  
885-502

**Rare Pearls**  
906-897

**Rare Gold**  
813-154

**Far Away**  
898-076

**Candid**  
656-095

**Night Magic  
Evening Mask**  
842-590

**Cool Confidence  
Original**  
872-469

**Cool Confidence  
Baby Powder**  
427-275

**Relevo Refresh  
Original**  
907-750

**On Duty Sport**  
875-726

**On Duty Unscented**  
464-351

**On Duty Original**  
893-970

**Black Suede**  
813-567

**Mystique**  
875-874

**Wild Country**  
656-080



**Roll-On  
Anti-Perspirant  
Deodorant**  
Each, 2.6 fl. oz.  
reg. \$6.25  
**\$5 each**



Foot Works  
Pedicure Tool  
592-712  
reg. \$12  
**\$9.50**

- 4 in 1:
- Fine-grain file
  - Metal file
  - Pumice
  - Brush



Foot Works  
Maximum Strength  
Cracked Heel Cream  
Transforms the  
look and feel of dry,  
cracked heels.  
2.5 fl. oz.  
086-762  
reg. \$12  
**\$9.50**



Foot Works  
Intensive  
Callus Cream  
Softens and  
moisturizes dry,  
rough skin.  
3.2 oz. net wt.  
851-310  
reg. \$12  
**\$9.50**



Foot Works  
Intensive Moisture  
Foot Cream  
Suitable for  
diabetics.  
2.5 fl. oz.  
069-016  
reg. \$12  
**\$9.50**



Foot Works  
Arthritis Achy Foot  
and Muscle Cream  
Contains glucosamine  
and chondroitin.  
2.5 fl. oz.  
208-400  
reg. \$12  
**\$9.50**



Foot Works Pedicure Kit  
Case, 3 1/2" L x 4 3/4" W.  
121-029  
reg. \$17  
**\$13**

- Kit includes:
- Nail clipper
  - Toenail clipper
  - Scissors
  - Small nail file
  - Cuticle pusher



 **Shop AVON Online**

**Click To Shop This Brochure** 

Dianne Hernandez Ind. Avon Representative



## make the great outdoors yours

Our DEET-free repellents protect without chemicals that feel harsh on skin. Bug Guard repels deer ticks that may carry and transmit Lyme disease.



### BUG GUARD PLUS PICARIDIN

#### Aerosol Spray

4 oz. net wt. 315-243 reg. \$25

**\$20**

#### Family-Size Pump Spray

8 fl. oz. 785-725 reg. \$25.50

**\$20**

#### Pump Spray

4 fl. oz. 610-161 reg. \$19.25

**\$14**

#### Towellettes

Each, 9" L x 5 1/2" W, .3 fl. oz.

269-562 reg. \$17

**\$13 pack of 8**

#### Bug Guard Plus IR3535® Expedition Aerosol Spray SPF 28

Repels mosquitoes that may transmit West Nile virus for 8 hours. Repels deer ticks for 12 hours. 4 oz. net wt.

521-370

reg. \$25

**\$20**



#### Bug Guard Plus IR3535® Expedition Pump Spray SPF 30

Repels mosquitoes for 8 hours, deer ticks for 10 hours. 4 fl. oz.

545-969

reg. \$25.25

**\$20**



#### Bug Guard Plus IR3535® Gentle Breeze SPF 30 Lotion

4.2 fl. oz.

525-452

reg. \$25

**\$20**



#### Bug Guard Plus Anti-Itch Spray

Provides temporary itch relief from insect bites. Does not repel insects. Use as directed. 2 fl. oz.

510-032

reg. \$15

**\$11**





fruit gets cute



**Shop AVON Online**

**Click To Shop This Brochure**

Dianne Hernandez Ind. Avon Representative



easily make fun fruit  
edible creations.

**NEW**

◆ **Fruit Basket with Banana Holder**

Allows for air circulation to prevent resting bruises on fruit. Hanger saves counter space and detaches for easy storage. 9 $\frac{1}{2}$ " diam. x 14 $\frac{1}{4}$ " H. Coated steel wire. Hand wash only. Imported. **659-295** reg. \$25

**\$20****NEW**

◆ **Strawberry Cutter**

Easily slices strawberries for a fast snack. 4 $\frac{1}{2}$ " L x 3" W x 1 $\frac{1}{4}$ " H. Stainless steel, BPA-free plastic. Hand wash only. Imported. **659-329**

reg. \$14

**\$11****NEW**

◆ **Pineapple Corer**

Cores and rings pineapple with an effortless twist. Comfortable, non-slip handle. 4" diam x 9 $\frac{1}{2}$ " H. Stainless steel, BPA-free plastic. Dishwasher safe. Imported. **659-300**

reg. \$13

**\$10****NEW**

◆ **3-in-1 Fruit Slicer**

Trio of nesting tools to easily prepare fruit snacks and carved creations. Melon baller, 1 $\frac{1}{4}$ " W x 7 $\frac{1}{2}$ " H, seed and pulp scooper, 2 $\frac{1}{4}$ " W x 7 $\frac{3}{4}$ " H, peeler, 3" W x 8 $\frac{1}{4}$ " H. Stainless steel and BPA-free plastic. Dishwasher safe. Imported. **659-314**

reg. \$17

**\$13 the set**



add pep to  
your prep

 **Shop AVON Online**  
Click To Shop This Brochure   
Dianne Hernandez Ind. Avon Representative

**NEW**❖ **Cutting Board with Colander**

A great space-saving solution! Chop, rinse, drain and store—all in one! Expandable to fit 24" W kitchen sinks. 16½"-24½" L (when fully expanded) x 9½" W x 2½" D. BPA-free plastic. Hand wash only. Imported. **659-348**  
reg. \$25

**\$20****NEW**❖ **5-Piece Coated Knife Set**

All the essential knives to slice, dice, mince and cut. Color coded, non-stick finish. Includes bread knife, 13" L, chef's knife, 12" L, carving knife, 12" L, utility knife, 9" L, and paring knife, 7" L. Coated stainless steel, BPA-free plastic handles with rubber grips. Hand wash only. Imported. **659-333**  
reg. \$25

**\$20 the set****NEW**❖ **12-Piece Plastic Container Set**

Color coded to help organize your food prep by portion size. Nesting containers (six) and lids (six) for space-saving storage. BPA-free plastic. Smallest: 5" L x 3½" W x 1½" H, 7 fl. oz.; largest: 10" L x 8½" W x 3" H, 92 fl. oz. Top-rack dishwasher and microwave safe. Imported. **659-352** reg. \$13

**\$10 the set****NEW**❖ **Plastic Measuring Spoons**

Six colorful measuring spoons nest and stack for neat storage. Includes ½ tbsp., 1 tbsp., ¼ cup, ½ cup, ⅓ cup and 1 cup. BPA-free plastic. Hand wash only. Imported. **659-371**  
reg. \$10

**\$8 the set**

# country chic

Polished and playful pieces with touches of fringe and rope, plus a sweet gingham print that's fun and fresh.



SLEEVELESS styling with point collar

**NEW**

◆ **Button-Front Sleeveless Dress**

Natural-colored, linen-blend sleeveless dress with point collar and button front. Features fringe detail at bottom hem and twisted rope-like belt with fringe ends.

Polyester/rayon/linen/cotton/nylon. Center back length: 37" on M, 39" on 1X

Machine wash, line dry. Imported.

XS-61 534-912

M(8-10) 534-950

L(12-14) 535-005

XL(16) 535-010

1X(18W-20W) 535-024

2X(22W-24W) 535-153

3X(26W-28W) 535-210

reg. \$54

**\$43**

**APPAREL SIZE CHART**

SIZE	BUST	WAIST	HIP
XS 0/2	30.5"-32"	23.5"-25"	32.5"-34"
S 4/6	33.5"-36"	26.5"-28"	36.5"-37"
M 8/10	36.5"-39"	29.5"-31"	38.5"-40"
L 12/14	39.5"-41"	32.5"-34"	41.5"-43"
XL 16	43"-44"	35.5"-36.5"	44.5"-46.5"
1X 18W/20W	46.5"-48.5"	39"-41"	48"-50"
2X 22W/24W	50.5"-52.5"	43"-46"	52"-54"
3X 26W/28W	54.5"-56.5"	47"-49"	56"-58"

Shoes not sold.

**Shop AVON Online**

Click To Shop This Brochure

Dianne Hernandez Ind. Avon Representative



# checks all the boxes

Get prepped for  
summer with a  
timeless gingham print.

## NEW

### ❖ Gingham Button- Down Top

Textured woven button-down top with a fuchsia gingham print in an oversized relaxed fit. Features right chest pocket and side slits. Polyester/spandex. Center back length: 31½" on M, 32½" on 1X. Machine wash and dry. Imported.

SI(4-6) 537-725

M(8-10) 537-854

L(12-14) 537-964

XL(16) 538-004

1X(18W-20W) 535-244

2X(22W-24W) 537-493

3X(26W-28W) 537-718

reg. \$47

**\$37**

SIDE SLITS  
and an  
oversized  
relaxed fit

# painterly print



TEXTURED  
KNIT with  
watercolor  
floral print

## ALL NEW

### ◆ Textured Pullover

Textured knit pullover features watercolor floral print on front panel and solid violet back panel. Oversized fit with shark bite hem. Polyester/spandex. Center back length: 27½" on M; 29" on 1X. Machine wash and dry. Imported.

S/M 508-114

L/XL 509-986

1X/2X 540-020

reg. \$47

**\$37**

### ◆ White Easy Capri Pants

White stretch-twill, pull-on capri pants with elastic waistband, side seam pockets and side slits at bottom. Features a slight wide-leg/flared silhouette. Rayon/nylon/spandex. Inseam: 21" on all sizes. Machine wash, line dry. Imported.

S(4-6) 541-189

1X(18W-20W) 542-132

M(8-10) 541-231

2X(22W-24W) 542-788

L(12-14) 541-250

3X(26W-28W) 542-811

XL(16) 542-075

reg. \$43

**\$33**

**Shop AVON Online**

Click To Shop This Brochure

Dianne Hernandez Ind. Avon Representative





MINI STRIPE  
print on back  
with button  
placket

bold  
stripes



Shoes not sold.



4-PIECE  
SET



### ALL NEW

#### ❖ Dual Pouch

Four-piece set includes two sand-colored pouches: a phone-case-sized pouch and smaller wristlet. Two detachable strap options include a tonal crossbody strap and glitter-stripe wristlet strap. 100% polyester. Larger pouch: 7½" L x 5" H. Smaller pouch: 4½" L x 4" H. Crossbody strap: 30" L when fully extended. Wristlet strap: 7" L. Imported. **538-080**  
reg. \$25

**\$20 the set**

#### ❖ Mixed Stripe Top

Navy/white mixed stripe-print top with point collar, short sleeves with rolled edges and button front. Features mini stripe print on back panel with button placket. Polyester/spandex. Center back length: 25" on M; 26½" on 1X. Machine wash, line dry. Imported.

S(4-6) **540-072** 1X(18W-20W) **540-948**

M(8-10) **540-087** 2X(22W-24W) **540-966**

L(12-14) **540-091** 3X(26W-28W) **541-102**

XL(16) **540-130**

reg. \$43

**\$33**

# knit picks

A breezy touch of crochet and cool graphic tees.



### ❖ Two-Pack Handkerchief Tees

Includes two short-sleeve tops with round neckline and side slits. White with printed satin-front panel: one with black/ivory print, one with purple/white print. Body: 100% cotton. Print panel: polyester/spandex. Center back length: 25" on M; 26 1/2" on 1X. Machine wash and dry. Imported.

S(4-6) 222-391	1X(18W-20W) 222-444
M(8-10) 222-406	2X(22W-24W) 222-459
L(12-14) 222-410	3X(26W-28W) 222-478
XL(16) 222-430	

reg. \$45

**\$35 the set**

### ❖ Crochet-Trim Top with Tie

Turquoise-colored woven blouse with 3/4-length sleeves. Features round neckline with tie with decorative beads, and crochet trim at sleeves and bottom hem. Body: polyester/spandex. Trim: 100% polyester. Center back length: 27" on M; 28 on 1X. Machine wash, line dry. Imported.

S(4-6) 222-100	1X(18W-20W) 222-152
M(8-10) 222-114	2X(22W-24W) 222-167
L(12-14) 222-129	3X(26W-28W) 222-190
XL(16) 222-133	

reg. \$43

**\$33**

### ❖ Easy Capri Pants

Black stretch-twill capri pants with side seam pockets and elastic waistband for easy pull-on styling. Features narrow leg silhouette with side slits at the bottom. Rayon/nylon/spandex. Inseam: 21" on all sizes. Machine wash, line dry. Imported.

S(4-6) 222-210	1X(18W-20W) 222-349
M(8-10) 222-239	2X(22W-24W) 222-368
L(12-14) 222-262	3X(26W-28W) 222-372
XL(16) 222-300	

reg. \$43

**\$33**

**Shop AVON Online**

Click To Shop This Brochure

Dianne Hernandez Ind. Avon Representative



Shoes/Sandals sold  
in page 141.



Shoes not sold.

## summer-ready stripes & denim

### ◆ Textured Stripe Cardigan

Open-front cardigan with textured blue/white stripes and long sleeves. Polyester/cotton. Center back length: 28" on M; 30½" on 1X. Machine wash and dry. Imported.

S(4-6) 621-197      1X(18W-20W) 627-688  
M(8-10) 625-245      2X(22W-24W) 628-866  
L(12-14) 626-677      3X(26W-28W) 628-878  
XL(16) 626-878  
reg. \$50

**\$40**

### ◆ Lightweight Denim Pants

Blue lightweight denim pants with side seam pockets, smocked waist, pull-on styling and wide-leg fit. 100% cotton. Inseam: 29½" on all sizes. Machine wash, line dry. Imported.

S(4-6) 629-723      1X(18W-20W) 637-757  
M(8-10) 637-594      2X(22W-24W) 638-848  
L(12-14) 637-628      3X(26W-28W) 638-146  
XL(16) 637-742  
reg. \$50

**\$40**

### ◆ Crochet-Trim Tank

White woven sleeveless top with solid knit back. Features crochet trim at front placket. Rayon/polyester/spandex. Center back length: 22" on M; 24" on 1X. Machine wash, line dry. Imported.

S(4-6) 638-256  
M(8-10) 638-385  
L(12-14) 638-715  
XL(16) 638-791  
1X(18W-20W) 638-863  
2X(22W-24W) 638-878  
3X(26W-28W) 639-813  
reg. \$40

**\$30**

**SLEEVELESS**  
styling with  
crochet trim  
on front  
placket



**OPEN**  
**FRONT**  
silhouette  
with a  
draping  
effect



# all about ease

## A. ♦ Lightweight Collared Top\*

Terra-cotta-stripped top with collar, open V-neck and cap sleeves. Relaxed box silhouette. Polyester/cotton/rayon. Center back length: 26" on M; 27½" on 1X.

S(4-6) 640-620 1X(18W-20W) 640-764  
M(8-10) 640-669 2X(22W-24W) 640-779  
L(12-14) 640-673 3X(26W-28W) 640-946  
XL(16) 640-711

reg. \$43

**\$33**

## B. ♦ Textured Tie-Neck Top\*

Ivory textured leaf patterned blouse with tie neck. Features long sleeves with elastic at sleeve hem. Polyester/spandex. Center back length: 24" on M; 25½" on 1X.

S(4-6) 980-825 1X(18W-20W) 982-502  
M(8-10) 981-578 2X(22W-24W) 982-942  
L(12-14) 981-836 3X(26W-28W) 983-088  
XL(16) 981-840

reg. \$45

**\$35**

## C. ♦ Piqué Shirt Dress

Navy button-down dress with collar, chest pockets and ¾-sleeves. Features shirrtail hem. 100% cotton. Center back length: 37½" on M; 39" on 1X. Machine wash, dry flat.

S(4-6) 639-230 1X(18W-20W) 640-597  
M(8-10) 639-339 2X(22W-24W) 640-601  
L(12-14) 639-343 3X(26W-28W) 640-616  
XL(16) 639-449

reg. \$50

**\$40**

## D. ♦ Split-Back Blouse\*

Mint green blouse with long sleeves and center back seam with slit. Features snap closures on front placket and sleeve cuffs. 100% polyester. Center back length: 26" on M; 27½" on 1X.

S(4-6) 641-612 1X(18W-20W) 641-684  
M(8-10) 641-627 2X(22W-24W) 641-699  
L(12-14) 641-665 3X(26W-28W) 641-718  
XL(16) 641-670



**Shop AVON Online**

Click To Shop This Brochure

Dianne Hernandez Ind. Avon Representative



All items on pages 114-115 are imported.

**E. ♦ Split Mesh Top\***

Top with black front and upper back with a rose-print mesh panel in back. Features round neckline, long sleeves and high-low hem. Body and mesh panel: polyester/spandex. Center back length: 30½" on M; 32" on 1X.

S(4-6) 983-138 1X(18W-20W) 983-843  
M(8-10) 983-183 2X(22W-24W) 983-881  
L(12-14) 983-589 3X(26W-28W) 983-968  
XL(16) 983-619

reg. \$40

**\$30**

**F. ♦ Embroidered Blouse\***

White floral embroidered blouse with pointed collar and full-button placket. Features long sleeves with roll tab and soft rib-knit side panels for comfort. Body and side panels: polyester/cotton/spandex. Center back length: 25" on M; 27" on 1X.

S(4-6) 398-273 1X(18W-20W) 398-311  
M(8-10) 398-288 2X(22W-24W) 398-345  
L(12-14) 398-292 3X(26W-28W) 398-364  
XL(16) 398-387

reg. \$47

**\$37**

**G. ♦ Split-Hem Leggings\***

Black soft-brushed knit leggings with wide elastic waistband. Features front seam with slit at the bottom. Polyester/spandex. Inseam: 26½" on all sizes.

S(4-6) 389-948 1X(18W-20W) 398-248  
M(8-10) 398-159 2X(22W-24W) 398-254  
L(12-14) 398-216 3X(26W-28W) 398-269  
XL(16) 398-228

reg. \$35

**\$27**

**H. ♦ Surplice Floral Dress\***

Floral-print dress with surplice neckline, ¾-length sleeves and bottom ruffle hem. Elastic waist with fabric tie belt. Lined at skirt. Body and lining: 100% polyester. Center back length: 38½" on M; 39" on 1X.

S(4-6) 971-928 1X(18W-20W) 978-788  
M(8-10) 971-934 2X(22W-24W) 979-893  
L(12-14) 971-953 3X(26W-28W) 979-685  
XL(16) 972-926

reg. \$50

**\$40**

**I. ♦ Rib-Knit Top\***

Lilac rib-knit top with high-low shirrtail hem. Features long sleeves with functional snaps at cuff. Cotton/polyester/spandex. Center back length: 27½" on M; 29½" on 1X.

S(4-6) 398-379 1X(18W-20W) 398-468  
M(8-10) 398-398 2X(22W-24W) 398-508  
L(12-14) 398-417 3X(26W-28W) 398-527  
XL(16) 398-421

reg. \$40

**\$30**

\*Machine wash, line dry. †Machine wash and dry.





Vintage  
Rosebud Bow  
Necklace only on sizes 12



❖ **Tie-Hem Wrap Blouse**

Pale blue textured satin wrap blouse with front tie and blouson sleeves. Oversized relaxed fit. 100% polyester. Center back length: 27½" on S/M; 29" on 1X/2X. Machine wash, line dry. Imported. S/M 067-477 L/XL 067-534 1X/2X 067-567 reg. \$45

**\$35**

❖ **Pleated Wide-Leg Pants**

Navy/white pinstriped wide-leg pants with inverted front pleat and side seam pockets. Pull-on styling with elastic waistband. Cotton/rayon/spandex. Inseam: 29" on all sizes. Machine wash and dry. Imported.

S(4-6) 067-720 1X(18W-20W) 067-845

M(8-10) 067-754 2X(22W-24W) 067-864

L(12-14) 067-792 3X(26W-28W) 067-883

XL(16) 067-838

reg. \$45

**\$35**

❖ **Contrast-Trim Blouse**

Textured woven blouse with contrast trim and long sleeves. Features button with keyhole at back of neck. 100% polyester. Center back length: 23½" on M; 25" on 1X. Machine wash, line dry. Imported. reg. \$40

**\$30 each**

Pink/Purple Trim:

S(4-6) 067-896

M(8-10) 067-902

L(12-14) 067-940

XL(16) 067-989

1X(18W-20W) 068-066

2X(22W-24W) 068-162

3X(26W-28W) 068-181

White/Navy Trim:

S(4-6) 068-029

M(8-10) 068-033

L(12-14) 068-052

XL(16) 068-071

1X(18W-20W) 068-234

2X(22W-24W) 068-454

3X(26W-28W) 068-473

**Shop AVON Online**

Click To Shop This Brochure

Dianne Hernandez Ind. Avon Representative



### ◆ Spring Print Dress

Floral-print midi-length dress with V-neck and collar. Features long sleeves with roll tab, self-tie fabric belt at waist and side seam pockets. Unlined. 100% polyester. Center back length: 47" on M and 1X. Machine wash, line dry (remove belt before washing). Imported.

S(4-6) **088-818** XL(16) **088-990** 2X(22W-24W) **089-140**  
 M(8-10) **088-822** 1X(18W-20W) **089-116** 3X(26W-28W) **089-154**  
 L(12-14) **088-913**  
 reg. \$54

**\$43**



V-NECK  
 COLLAR  
 and long  
 sleeves with  
 roll tab

Shoes not sold.



### ◆ Four-Pack Spring Tees

Includes dusty blue, purple with white dot print, melon and pale yellow classic-fit tees. Features round neckline, short sleeves and slightly rounded hem. Cotton/polyester. Center back length: 25" on M, 27" on 1X. Machine wash and dry. Imported.

S(4-6) **088-511** XL(16) **088-602** 3X(26W-28W) **088-727**  
 M(8-10) **088-526** 1X(18W-20W) **088-617**  
 L(12-14) **088-550** 2X(22W-24W) **088-636**  
 reg. \$50

**\$40 the pack**



Blossom Belle  
 Bag Charm  
 sold separately.

### ◆ Soft Tote Bag

Biscotti soft-pebbled faux-leather tote. Unlined. Features snap closure and inside slotted pocket. Man-made materials. 21" L x 6" W x 12½" H. Strap drop: 10¼" L. Imported. **088-799**  
 reg. \$50

**\$40**

### Blossom Belle Bag Charm

Goldtone chain with assorted beads in marbled green and pink shades, plus pearly beads and floral motifs. Approx. 12" L with two clasps. **390-637**  
 reg. \$20

**\$15**



❖ **Spring Jacket**

Black/white floral-print jacket that's lightweight and water-resistant. Features front zipper, hood with drawstrings and side pockets. Relaxed, oversized fit. 100% cotton. Center back length: 33" on S/M; 33½" on 1X/2X. Machine wash, line dry. Imported.  
 S/M 984-376  
 L/XL 984-400  
 1X/2X 984-448  
 reg. \$70



❖ **Embroidered Sleeve Top**

Coral top features round neckline with woven trim and embroidered eyelet sleeves. Body: polyester/rayon/spandex. Sleeves: 100% cotton. Center back length: 22" on M; 24" on 1X. Machine wash, dry flat. Imported.  
 S(4-6) 983-987      1X(18W-20W) 984-156  
 M(8-10) 984-012    2X(22W-24W) 984-209  
 L(12-14) 984-103    3X(26W-28W) 984-323  
 XL(16) 984-122  
 reg. \$43

**\$33**



❖ **Two-Pack Rainy Day Socks**

Includes two printed pairs. Polyester/spandex. Fits shoe sizes 6-10. Machine wash and dry. Imported.  
**984-357**  
 reg. \$13  
**\$10 the pack**

2-PIECE SET

#### ◆ Textured Two-Piece Set

Maroon two-piece set in soft crinkle textured fabric. Long-sleeve top with boat neck and elastic at hem of sleeves. Pull-on wide-leg pants with elastic waistband. Cotton/polyester. Center back length: 23½" on M; 25¼" on 1X. Machine wash, dry flat. Imported. S(4-6) 398-531 M(8-10) 398-546 L(12-14) 398-558 XL(16) 398-565 1X(18W-20W) 398-578 2X(22W-24W) 398-584 3X(26W-28W) 398-622 reg. \$54

**\$43 the set**

Glided Petal Statement Earrings sold on page 130. Shoes not sold.

#### ◆ Wild Stripe PJ Set

Mocha/cream stripe with animal-print trim pajama set. Top with notched collar, button placket, chest pocket and short sleeves. Pull-on full-length bottoms with elastic waist. Polyester/spandex. Center back length: 24" on M; 25½" on 1X. Inseam: 29" on all sizes. Machine wash and dry. Imported. S(4-6) 389-857 M(8-10) 389-876 L(12-14) 389-895 XL(16) 389-908 1X(18W-20W) 389-914 2X(22W-24W) 389-929 3X(26W-28W) 389-933 reg. \$50

**\$40 the set**

2-PIECE SET



INCLUDES DRAWSTRING POUCH

#### ◆ Wild Stripe Slippers

Mocha/cream mule slipper with animal-print upper and stripe insole. Rubber outsole. Comes with matching drawstring pouch. Man-made materials. Imported. S(5-6) 389-680 M(7-8) 389-694 L(9-10) 389-713 XL(11-12) 389-732 reg. \$29

**\$22**

necklace and  
earring sets



**ALL NEW**

**Pastel Petals**

**Necklace and Earring Set**

Marquise-cut glass stones in clusters of mint green, lilac, blush and champagne tones set in goldtone. 16½" L with 3½" extender. Pendant, 1½" L. Pierced earrings, 1¼" L. **571-070** reg. \$23

**\$17 the set**

**Prism Flower**

**Necklace and Earring Set**

Marquise- and round-cut glass stones in shades of rose, lilac, champagne and aqua set in silvertone. 16½" L with 3½" extender. Pendant, 1½" L. Lobster closure. Pierced studs, ¾" L. **585-040** reg. \$23

**\$17 the set**

burst of  
brilliance

**Shop AVON Online**

Click To Shop This Brochure

Dianne Hernandez Ind. Avon Representative



# pops of pastels

Soothing shades take center stage.

**NEW**

**Blushing Meadow Collection**  
An assortment of soft pastel and natural tones with goldtone accents

**Beaded Necklace**  
24" L with 3½" extender  
**570-830**  
reg. \$25  
**\$20**



**Earring Set**

Three-pair set featuring goldtone, pastel pink and green hoops. Largest, approx. 1" L. Pierced.

**570-859**  
reg. \$17

**\$13 the set**

3-pair set



**Drop Earrings**

Swirled soft green and pink drops with beige textured accent.

Approx. 2¼" L.  
Pierced **570-844**  
reg. \$17

**\$13**



**NEW**

**Seaside Views Eyeglass Chain**

Colored beads and sea-themed charms set in goldtone. 31½" L with clasp closure and loops that fit most eyewear.

A. Multicolor (with pearly beads) 565-557

B. Tropical 570-624

C. Coastal 570-610

reg. \$13

**\$10 each**

sea..and be seen!

**NEW**

**Charm Voyage Bracelet**

Goldtone bangle with playful resin charms. One size fits most.

D. Globetrotter

556-078

E. Beach Girl

556-062

F. Sea Life 563-910

reg. \$13

**\$10 each**



 **Shop AVON Online**  
 Click To Shop This Brochure   
 Dianne Hernandez Ind. Avon Representative

6 mix or match, any 2 for discount to apply, page 122

# bevy of blues

Layers of statement stones  
in striking shades.

necklace and bracelets  
feature semi-precious  
sodalite, genuine  
mother-of-pearl and  
reconstituted green  
turquoise stones



**Layered Necklace**  
Includes semi-precious sodalite, genuine mother-of-pearl and reconstituted green turquoise stones. Shortest layer, 16 1/2" L; longest layer, 19" L with 3 1/2" extender. ~~549-008~~  
reg. \$25  
**\$20**

**NEW**

**Riviera Blue Collection**  
The look of turquoise set in goldtone.

**Statement Ring**

With the look of turquoise and faux-agate stones. 6 555-454  
8 555-579  
10 555-860  
reg. \$13

**\$10**



set of 2

**Bracelet Set**

Set of two. Includes semi-precious sodalite, genuine mother-of-pearl and reconstituted green turquoise stones. Stretches to fit most. ~~555-220~~  
reg. \$17

**\$13 the set**

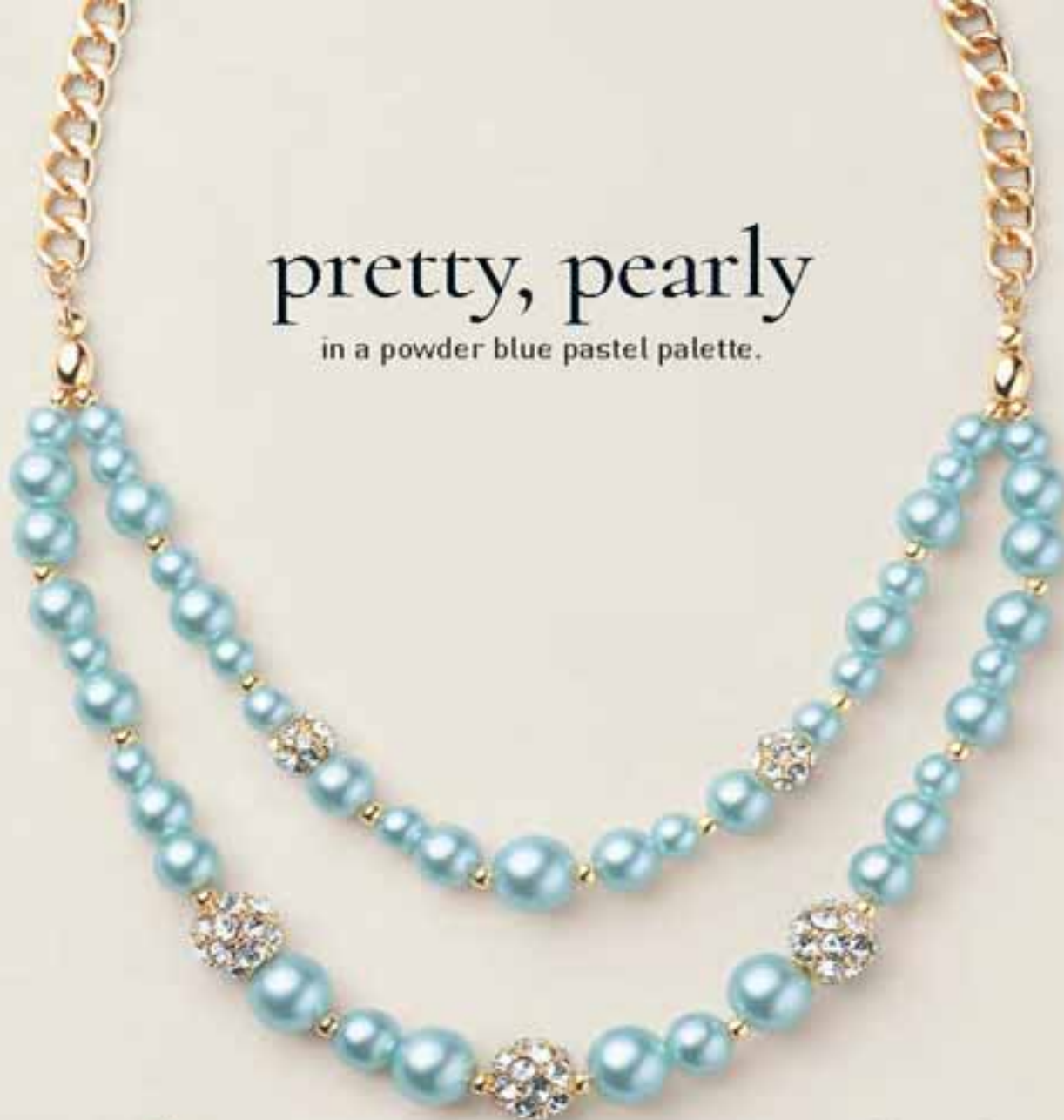
**Hoop Earrings**

With the look of turquoise and faux-agate stones. Approx. 1" L. Pierced. ~~555-291~~  
reg. \$13

**\$10**



pretty, pearly  
in a powder blue pastel palette.



necklace, earring  
and bracelet set



**Ice and Allure  
Three-Piece Pearly Set**  
Blue glass pearlesque  
beads and crystal-like  
studded bead accents set  
in goldtone. 16½" L with  
3½" extender. Lobster  
closure. Pierced drops,  
1" L. Bracelet stretches  
to fit most. **641-847**  
reg. \$33

 **Shop AVON Online**

**Click To Shop This Brochure**

Dianne Hernandez Ind. Avon Representative



**Blue Aurora Collection**  
Shades of blue and iridescent stacked baguette stones set in silvertone.

**Necklace**  
16 1/2" L with 3 1/2" extender.  
646-318 reg. \$25  
**\$20**



bracelet and earring set

**Bracelet and Earring Set**  
Bracelet, 7 1/4" L with 1" extender. Pierced drops, approx. 1 1/4" L.  
658-686 reg. \$23  
**\$17 the set**



**Blue Night Skyline Collection**  
Tennis-style designs with shades of blue glass stones set in goldtone.

**Choker Necklace**  
One size fits most.  
641-851 reg. \$20  
**\$15**



**Flex Bracelet**  
One size fits most.  
641-870 reg. \$17  
**\$13**



**Kaleido Spark Hoop Earrings**  
Glass baguette stones. Approx. 1" L. Pierced.  
Multicolor/Goldtone  
658-671  
Green/Goldtone  
646-337  
Blue/Silvertone  
658-667 reg. \$13  
**\$10 each pair**



3-pair packs



**Mix and Mingle Hoop Earring Pack**

Three pairs of hoops with textured and smooth finishes. Largest, 1 1/4" L. Pierced.  
Svertone 644-554 Goldtone 641-904  
reg. \$20

**\$15 each pack**

semi-precious  
aventurine  
drop  
and quartz  
stones



**Mix and Mingle Layered Necklace**

Layered goldtone chains with semi-precious green aventurine drop stone and quartz stones, plus faceted glass beads. Shortest layer: 16 1/2" L; longest layer: 21" L with 3 1/2" extender. Pendant drop, 1" L. Lobster closure. 641-885 reg. \$20

**\$15**

necklace and  
earring set



**Spring Petals  
Statement  
Collection**

Multicolor pear-cut glass stones set in goldtone.

**Ring**

1 1/4" W.  
6 687-662  
8 687-734  
10 687-753  
reg. \$13

**Necklace  
and Earring Set**

16 1/2" L with 3 1/2" extender. Pendant drop, 2" L. Lobster closure. Pierced drops, 1 1/2" L.  
687-366  
reg. \$30



**Necklace**

20" L with 3 1/2" extender.  
168-113 reg. \$23

**\$17**

**Rainbow Bloom  
Collection**

Vibrant multicolor glass stones in a floral cluster design set in goldtone.

**Earrings**

1" L. Pierced. 168-147  
reg. \$17

**\$13**

**Shop AVON Online**

Click To Shop This Brochure

Dianne Hernandez Ind. Avon Representative



### Stainless Steel the Spotlight Duo-Tone CZ Collection

Stainless steel geometric links with CZ pavé stones and gold ion-plated accents. Ion plating enhances the durability and brightness of the finish.

#### Necklace

17" L with 1" extender. Pendant, 2" L. Lobster closure. **958-346**  
reg. \$40

**\$30**

#### Drop Earrings

2" L. Pierced. **958-365**  
reg. \$43

**\$33**

#### Ring

Approx. 1/4" W  
5 **958-456** 8 **958-513**  
6 **958-494** 9 **958-532**  
7 **958-509** 10 **971-915**  
reg. \$40

**\$30**



### Dazzling Delight Collection

Silvertone faceted beads with pearly and filigree bead accents

#### Layered Necklace

Shortest layer, 29 1/2" L; longest layer, 32" L with 3 1/4" extender. **104-760**  
reg. \$25

**\$20**

#### Earrings

With CZ stone. Approx. 2 1/2" L. Pierced. **105-106**  
reg. \$17

**\$13**

#### Ring

3/4" W  
6 **105-182** 8 **105-228** 10 **105-269**  
reg. \$13

**\$10**

#### Layered Bracelet

7 1/4" L with 1" extender. **105-068**  
reg. \$20

**\$15**



Green Aventurine  
represents  
prosperity and good  
fortune. **646-299**

Purple Amethyst  
represents  
calm, peace and  
protection. **646-250**

White Quartz  
represents wisdom, purity  
and clarity. **646-265**

### Stone and Spirit Beaded Necklace

Semi-precious stones paired with  
colored faceted glass beads and  
goldtone pendant. 17" L with 3½"  
extender. Pendant, approx. 1" L  
reg. \$23

**\$17 each**

### Vine and Shine Collection

Mix of beads (including faceted  
and glass) in green tones with  
textured goldtone metal accents.

### Long Beaded Necklace

28½" L with 3½" extender.

**701-721**

reg. \$30

**\$23**

### Hoop Earrings

3¼" L. Pierced.

**715-375**

reg. \$20

**\$15**



**Shop AVON Online**

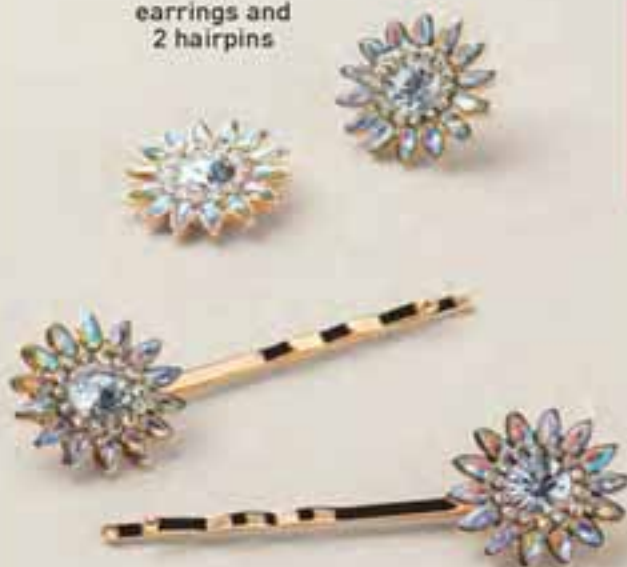
Click To Shop This Brochure

Dianne Hernandez Ind. Avon Representative





set of earrings and 2 hairpins



**Daisy Dazzle Hairpin and Earring Set**

Crystal-like studded earrings with matching hairpins set in goldtone. Pierced studs,  $\frac{1}{4}$ " L. Each hairpin, 2" L.

646-121

reg. \$17

**\$13 the set**



**Virtuosa Collection**

Purple, green and ruby-colored resin beads with pearly accents set in goldtone.

**Cross Necklace**

16 $\frac{1}{2}$ " L with 3 $\frac{1}{2}$ " extender.

646-136

reg. \$17

**\$13**

**Statement Ring**

6 646-227

8 646-231

10 646-246

reg. \$13

**\$10**



**Pearly Heartstrings Collection**

Heart shapes with white resin and floral metal design, plus pearly chain drop accent set in goldtone.

**Necklace**

16 $\frac{1}{2}$ " L with 3 $\frac{1}{2}$ " extender. Lobster closure.

644-626

reg. \$17

**\$13**

**Earrings**

1" L. Pierced.

645-402

reg. \$13

**\$10**

Circle  
164-452

Heart  
167-978



**Golden Vines Pendant Necklace**

Goldtone with openwork branches and clear stone accents. 16½" L with 3½" extender. Pendant, approx. 1" L reg. \$17

**\$13 each**



**Garden Flutter Hoop Earrings**

Goldtone hoops with butterfly design. Approx. 1½" L. Pierced. 955-529 reg. \$13

**\$10**

necklace and  
earring set



**Beloved Faith Necklace and Earring Set**

Goldtone with clear stone accents and pavé cross. 16½" L with 3½" extender. Pendant, approx. ½" L. Pierced earrings, approx. ¼" L. 168-109 reg. \$17

**\$13 the set**



**Sculpted Flora Statement Earrings**

Sculpted rose goldtone. Approx. 1" L. Pierced. 956-984 reg. \$13

**\$10**

**Gilded Petal Statement Collection**  
Goldtone with floral filigree design.



**Necklace**

18½" L with 3½" extender. Center floral filigree motif (largest), approx. 1½" L. 168-185 reg. \$24

**Earrings**

Approx. 2" L. Pierced [fishhook]. 168-219 reg. \$17



**Solar Edge Drop Earrings**

Goldtone and silver-tone openwork discs. Approx. 2½" L. Pierced. 956-286 reg. \$13

**\$10**

**Shop AVON Online**

Click To Shop This Brochure

Dianne Hernandez Ind. Avon Representative



**Sweet Daisy Collection**

Goldtone paperclip chain with pavé accents, white enamel charms and pearlesque bead.

**Charm Necklace**

18" L with 3 1/4" extender. Charms, approx. 1 1/2" L-1/2" L

**168-352**  
reg. \$25  
**\$20**

3-pair set



2-in-1:  
can wear goldtone hoops separately



**Charm Bracelet**

7 1/4" L with 1" extender. **168-534**  
reg. \$20

**\$15**

**Earring Set**

Three-pair set. Includes two-in-one goldtone huggie hoops with removable pavé link, pearly studs and daisy studs with CZ accent.

Hoops, approx. 3/4" L. Pierced. **168-568**  
reg. \$17

**\$13 the set**

**Vintage Rosebud Collection**

Antiqued silvertone finish.

**Bolo Necklace**

32 1/2" L with 3 1/2" extender.

Pendant, 1 1/4" L; adjustable Lobster closure.

**089-431**  
reg. \$23  
**\$17**



**Earrings**

1 1/4" L. Pierced. **104-592**  
reg. \$13

**\$10**

**Ring**

Approx. 1/2" W. **6 104-650**  
**8 104-664**  
**10 104-683**  
reg. \$10

**\$8**



**Bracelet**

7 1/4" L with 1" extender. Lobster closure. **104-611**  
reg. \$17

**\$13**

Dragonfly/Blue  
141-956

Butterfly/Pink  
142-364

necklace and  
earring sets

**Bracelet Set**

Set of three.  
Each, 7 1/4" L with 1" extender.  
142-531  
reg. \$20

**\$15 the set**

**Charmed by Nature Collection**

Colorful enamel charms set in goldtone.

**Necklace and Earring Set**

16 1/2" L with 3 1/2" extender. Pendant, 2" L. Lobster closure. Pierced earrings, 3/4" L. reg. \$24

**\$18 each set**



set of 3



necklace and  
earring set

**Drop Earrings**

1 1/2" L. Pierced.  
140-065  
reg. \$20

**\$15**

**Spring Shower Drops Collection**

Lavender, aqua and crystal-like glass stones set in goldtone.

**Bleu Bloom Fleur Collection**  
Blue florals with pearly accents set in goldtone.

**Hairpin Set**  
Set of two. Each, 2 1/2" L. Flower, 1/2" W. 141-918  
reg. \$17

**Necklace and Earring Set**  
16 1/2" L with 3 1/2" extender. Pendant drop, 1 3/4" L. Lobster closure. Pierced studs.

140-046 reg. \$23

**\$17 the set**

**Ring**  
Approx. 1/2" W.

6 140-070 8 140-983 10 141-884  
reg. \$12



**Necklace**  
24" L with 3 1/2" extender. Lobster closure.  
142-565  
reg. \$25  
**\$20**

**Drop Earrings**  
1 1/2" L. Pierced. 142-584  
reg. \$13

**Ring**  
1/2" W.  
reg. \$17  
**\$13**

**Shop AVON Online**

Click To Shop This Brochure

Dianne Hernandez Ind. Avon Representative



**Blessed Initial Charm Necklace**

Goldtone initial, cross with CZ stones and pink CZ stone heart. 16½" L with 3½" extender. Initial and cross, approx. ½" L. reg. \$20

**\$15 each**



A  
149-919



B  
149-961



C  
153-057



D  
154-637



E  
154-675



G  
154-694



J  
157-363



K  
163-008



L  
163-092



M  
163-107



N  
163-111



P  
163-130



R  
163-786



S  
164-012



T  
164-065



V  
164-380

two-necklace set:  
can wear separately  
or together



**Ribbonette Necklace Set**

Includes two separate necklaces. Goldtone ball station chain with dusty purple velvety bow pendant. 17" L with 3½" extender. Pendant, approx. ¾" L. Purple glass faceted bead necklace: 16½" L with 3½" extender. **943-533** reg. \$23

**\$17 the set**

**Ribbonette Earrings**

Dusty purple velvety coating. Approx. ¾" W. Pierced.

**950-531**  
reg. \$13

**\$10**



**Enamel Elegance Drop Earrings**

Colored enamel drop with matching center stone. Approx. 1½" L. Pierced.

Red **958-240**  
Purple **958-236**  
Blue **958-289**  
reg. \$20

**\$15 each pair**

**Birthstone Edit Chain Bracelet**

Goldtone paperclip chain with colored stones. 7¼" L with 1" extender. reg. \$13

**\$10 each**



January  
**715-394**



February  
**715-409**



March  
**715-891**



April  
**717-287**



May  
**719-480**



June  
**721-229**



July  
**897-173**



August  
**899-946**



September  
**911-930**



October  
**915-568**



November  
**935-596**



December  
**937-383**





necklace,  
earring and  
ring set

**Spring Awakening 3-Piece Set**  
Pink ombré florals with stone accent set in goldtone. 16½" L with 3½" extender. Pierced earrings, approx. ¾" L. Stretch ring fits most. ¾" W. **089-412**  
reg. \$25  
**\$20 the set**



**Blooming Bold Statement Necklace**  
Black cord with pink statement flowers and center stone accent. 18" L with 3½" extender. Flowers, approx. 1½"-2½" L. **089-408** reg. \$25  
**\$20**



**Pink Petal Cascade Necklace and Earring Set**  
Pink flower charms accented by white pearly beads set in goldtone. 16½" L with 3½" extender. Y-chain drop, 5" L. Pierced earrings, approx. ¾" L. **089-169**



**Delicate Florals Collection**  
Goldtone with assorted charms.

**Charm Necklace**  
Charms with white enamel and pink tulip motif. 16½" L with 3½" extender. Charms, approx. ½"-¾" L. **089-207**  
reg. \$17  
**\$13**

**Bracelet and Earring Set**  
White pearlesque beads with charms, including colored enamel tulip motif with green baguette stone. 7¼" L with 1" extender. Pierced earrings, approx. ½" L. **089-245**  
reg. \$17  
**\$13 the set**



bracelet and earring set

**Tulip Garden Collection**  
Goldtone with tulip motif in green and pink enamel.



set of 2 hairpins

**Earrings**  
Approx. 2" L. Pierced. **089-340**  
reg. \$17  
**\$13**

**Hairpin Set**  
Set of two: tulip motif and goldtone with pearly beads. Each, 2" L. **089-317**  
reg. \$17  
**\$13 the set**

**Spring It Forward  
Lotus Watch**

Turquoise leatherlike strap, 9" L. Goldtone case with lotus flower design on dial, 34mm diam. Water-resistant to 3 ATM. Quartz movement. **105-527**  
reg. \$40

**\$30**



**Spring It On  
Charm  
Bracelet**

Vibrant pastel colors with goldtone charms. Stretches to fit most.

Blush Bloom/  
Pink **105-508**

Cosmic Vibes/  
Blue **105-448**

Key to My Heart/  
Purple **105-421**

Lucky Me/  
Green **105-489**  
reg. \$17

**\$13 each**

**Spring Botanica Collection**

Colorful spring motifs with shell accents.

**Necklace**

16½" L with 3½" extender. Pendant, 1" L. Lobster closure. reg. \$17

**\$13 each**

**Stretch Ring**

Stretches to fit most. reg. \$17

**\$13 each**



Tulip/Rose Goldtone Necklace

**105-273**

Tulip/Rose Goldtone Ring

**105-358**



Hummingbird/Goldtone Necklace

**105-288**

Hummingbird/Goldtone Ring

**105-379**



Butterfly/Silver-tone Necklace

**105-387**

Butterfly/Silver-tone Ring

**105-383**



# RHYTHMS OF Rio



*Dance in the streets and join the raucous  
revelry and the iconic celebration  
of uninhibited joy and exotic exuberance.*

 **Shop AVON Online**

[Click To Shop This Brochure](#)

Dianne Hernandez Ind. Avon Representative



NEW! LIMITED EDITION

fruity floral

Far Away Rio

Eau de Parfum

1.7 fl. oz. 220-810

reg. \$32

**\$25 \$19.99**

Top: Pink Pineapple,

Juicy Mango,

Coconut Water

Mid: Lily Petals,

Freesia Blooms, Star

Jasmine, Tonka Bean

Base: Sweet Cashew

Milk, Sandalwood,

Vanilla, Golden

Amber



NEW LIMITED EDITION

# SOAK IN THE Vibes



 **Shop AVON Online**

**Click To Shop This Brochure** 

Dianne Hernandez Ind. Avon Representative

and without sulfates, parabens, phthalates, silicone and mineral oil.

**AVON SENSES  
COPACABANA COCONUT**

Rich and refreshing.  
Coconut-fragranced.

**Bubble Bath**

Up to 24 baths per bottle.  
24 fl. oz. 220-566 reg. \$18

**\$14**

**Whipped Body Butter**

With moisturizing shea butter,  
it leaves skin feeling deliciously  
smooth and delicately scented.  
6 oz. net wt. 220-676 reg. \$21

**\$16**

**both for \$22.50**

**\$39 value**  
**342-925**

**AVON SENSES  
MANGO SAMBA SPLASH**

Fruity and juicy.  
Mango-fragranced.

**Bubble Bath**

Up to 24 baths per bottle.  
24 fl. oz. 220-642 reg. \$18

**\$14**

**Whipped Body Butter**

With moisturizing shea butter,  
it leaves skin feeling deliciously  
smooth and delicately scented.  
6 oz. net wt. 220-695 reg. \$21

**\$16**

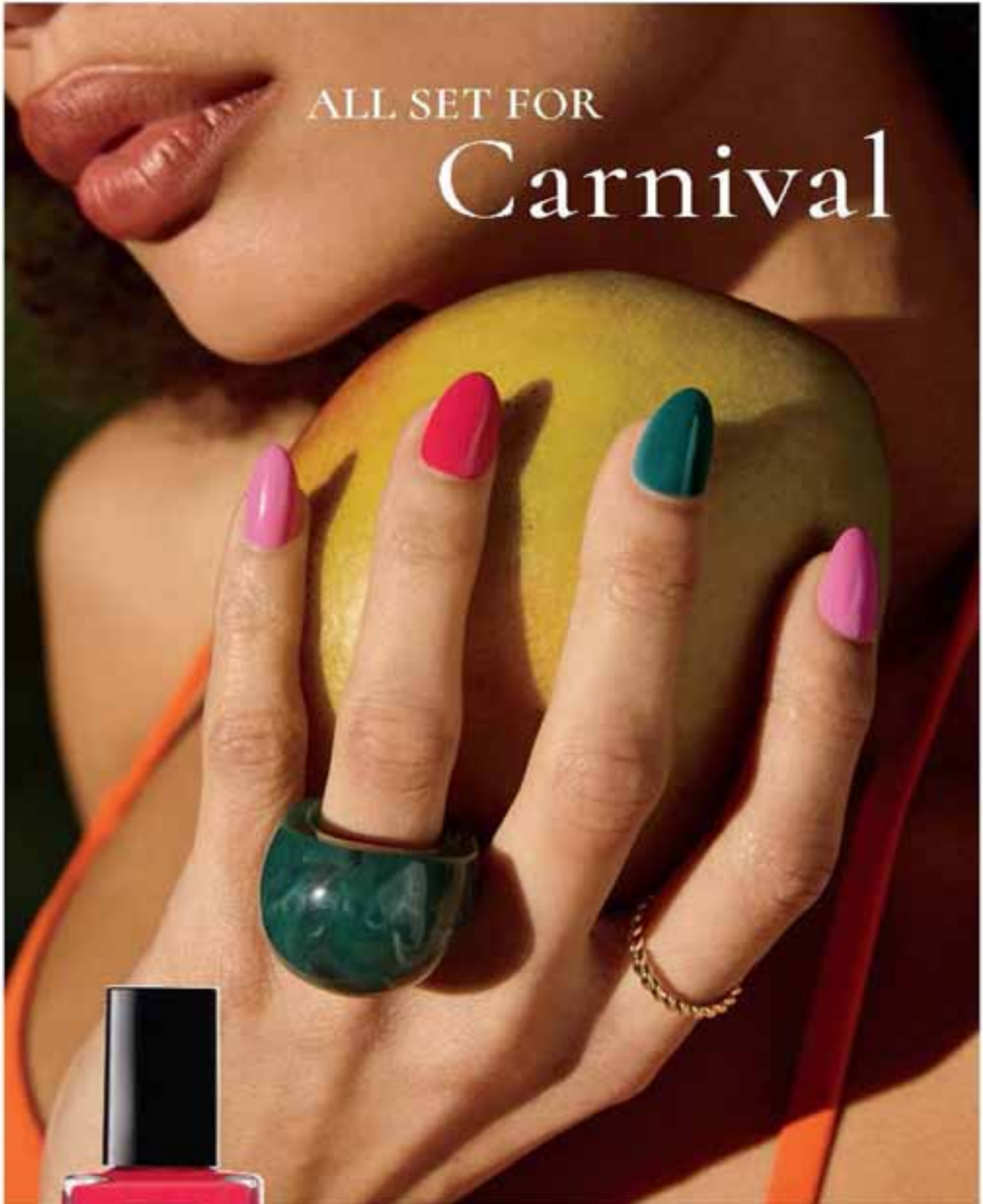
**both for \$22.50**

**\$39 value**  
**342-946**



NEW! LIMITED EDITION

ALL SET FOR  
**Carnival**



**fmg Glimmer Rio Rising Nail Lacquer**  
Nail-strengthening, long-wearing,  
no-chip formula. Formulated without  
phthalates, sulfates, parabens,  
toluene, formaldehyde and  
camphor. 4 fl. oz. reg. \$13

  
SATIN  
Carnival Coral  
220-748

  
SATIN  
Rio de Jade  
220-752

  
SATIN  
Hot Pink & Hermit  
220-767



**Shop AVON Online**

Click To Shop This Brochure 

Dianne Hernandez Ind. Avon Representative

◆ **Straw Hat**

Natural-colored wide-brim straw hat with matching bow. Paper/polyester. Brim size: approx. 6" L. Imported.

222-717

reg. \$25

**\$20**

◆ **Rio Sandals**

Crisscross sandals in copper metallic faux-snake print. Features padded insole and rubber outsole. Man-made materials. Imported.

6 222-977

7 222-871

8 222-866

9 222-859

10 222-886

11 222-982

reg. \$40

**\$30**



HOT NIGHTS,  
Cool Colors.

◆ **Tropical Mist**

**Two-Piece Set**

Multicolor-print  
lightweight chiffon set.  
Long-sleeve top features  
smocked neckline for  
multiple styling options  
[wear on or off shoulders].  
Lining at body only  
[sleeves are unlined].  
Wide-leg pants with  
elastic drawstring waist.  
Pants are fully lined.  
Shell: polyester/metallic  
fiber. Lining: 100%  
polyester. Center back  
length: 20½" on M; 22"  
on 1X. Inseam for shell:  
29" on all sizes. Inseam  
for lining: 27½" on all  
sizes. Machine wash, line  
dry. Imported.

514-4) 222-977

M(8-10) 222-986

L(12-14) 222-994

XL(16) 222-992

1X(18W-20W) 222-987

2X(22W-24W) 222-106

3X(26W-28W) 222-118

reg. \$65

**\$50 the set**

 **Shop AVON Online**

**Click To Shop This Brochure**

Dianne Hernandez Ind. Avon Representative



necklace and  
earring set

**Horizonte Necklace  
and Earring Set**  
Chunky sculptural  
aqua beads and  
faceted glass beads  
with goldtone  
accents. 19" L with  
3 1/2" extender. Pierced  
drops, approx. 2" L.  
223-125  
reg. \$25  
**\$20 the set**

◆ **Wave Stripe Dress**  
Multicolor wave-print maxi dress with Y-neck, front slit and side pockets. Fully lined. Body: 100% polyester. Lining: 100% cotton. Center back length: 52" on all sizes. Machine wash, line dry. Imported.  
S(4-6) 222-483  
M(8-10) 222-526  
L(12-14) 222-848  
XL(16) 222-969  
XX(18V-20W) 222-636  
XXX(22V-24W) 222-656  
XXX(26W-28W) 222-783  
reg. \$65  
**\$50**

BE THE GIRL FROM  
**Ipanema**

 **Shop AVON Online**  
Click To Shop This Brochure   
Dianne Hernandez Ind. Avon Representative

©2011 Avon Products, Inc. All rights reserved. 5082-001-0001

set of  
4 pairs

**Ipanema Beaded  
Statement Necklace**

Earthy toned and turquoise-colored beads accented with Murano-like glass beads and goldtone details on a black cord. 28" L with 3½" extender. 222-736  
reg. \$25

**\$20**

**Samba Beat  
Earring Pack**

Set of four pairs. Goldtone hoops and fan-shaped studs, plus yellow and green hoops. All approx. 1" L. Pierced. 222-789  
reg. \$23

**\$17 the pack**

LIMITED EDITION

◆ **Tie-Front Short-Sleeve Top**

Orange woven gauze button-front shirt with short sleeves. Features bottom tie and ladder lace details across chest. Rayon/polyester with spandex (contrast detail). Center back length: 26W" on M; 26" on TX. Machine wash. Line dry. Imported.

814-41 229-128

809-101 222-164

1112-141 229-179

XL1541 225-182

XX19W-20W1 229-216

XX22W-24W1 229-229

XX26W-28W1 229-235

reg. \$43

**\$33**

SALSA

Sunrise



**Shop AVON Online**

Click To Shop This Brochure

Dianne Hernandez Ind. Avon Representative



**Copa Glow Statement Necklace**

Fan-shaped design with pearly cabochon center accented with blue and coral-colored faceted beads on a goldtone link chain. 16½" L with 3½" extender.

223-383

reg. \$23

**\$17**

**Copa Glow Statement Earrings**

Goldtone textured fan-shaped design. Approx. 1¼" L. Pierced.

223-398

reg. \$17

**\$13**



LIMITED EDITION

◆ **Lightweight Pullover**

White relaxed-fit pullover top. Features knit body with textured woven details at bottom hem and pocket. 100% polyester. Center back length: 28" on M; 29½" on 1X. Machine wash, line dry. Imported.

S/4-6 | 223-249

M(8-10) | 223-273

L(12-14) | 223-288

XL(16) | 223-292

1X(18W-20W) | 223-324

2X(22W-24W) | 223-348

3X(26W-28W) | 223-377

reg. \$43

**\$33**



**Shop AVON Online**

Click To Shop This Brochure

Dianne Hernandez Ind. Avon Representative



**Rio Tropical  
Rainforest Collection**

Mix of colored beads  
and glass stones  
with burnished-like  
goldtone charms.

**Necklace**

Layered necklace  
with paperclip chain  
layer 16½" L with  
3½" extender. Pendant,  
1" L. Lobster closure.

**223-402**

reg. \$25

**\$20**

**Hoops**

With pink flower and  
translucent yellow  
butterfly charms.

2" L. Pierced.

**223-421**

reg. \$20

**\$15**

# Copa

## COMPANIONS

**Earrings**

Burnished-like finish  
with CZ stone accents.

2" L. Pierced. **223-455**

reg. \$13

**\$10**

**Bracelet Set**

Set of three includes  
paperclip chain bracelet.  
Can layer or wear  
separately. Beaded  
bracelet stretches to fit  
most. Other two bracelets:  
7¼" L with 1" extender,  
lobster closure.

**223-460**

reg. \$20

**\$15 the set**

set of 3

So many ways  
to make her day  
special

M  
C  
M



◆ **Embroidered  
Floral Dress**

Black floral-embroidered mesh dress features round neckline and sheer short sleeves. Body is lined with soft knit underlayer. Back zipper. Knee-length fit. Body and lining 100% polyester. Center back length: 39" on M; 41" on 1X. Machine wash, line dry. Imported.

S(4-6) 221-892

M(8-10) 221-907

L(12-14) 221-926

XL(16) 221-945

1X(18W-20W) 221-964

2X(22W-24W) 221-979

3X(26W-28W) 221-983

reg. \$65

**\$50**



**Shop AVON Online**

**Click To Shop This Brochure**

Dianne Hernandez Ind. Avon Representative



**Boldly Yours Pearly Collection**

Designed with statement glass faux pearls enhanced with a luxe, weightier feel and rich shine—on a chunky goldtone link chain.

**Necklace and Earring Set**

18½" L with 3½" extender.  
Lobster closure.

Pierced studs, ¾" L

223-474 reg. \$40

**\$30 the set**

Mother's Day is May 10

necklace and earring set

**Clip-On Earrings**

¾" L

223-508

reg. \$13

**\$10**

**Ring**

¾" W

6 223-546

8 223-584

10 223-599

reg. \$13

**\$10**

clip-on earrings

**Bracelet**

Stretches to fit most.

223-489

reg. \$23

**\$17**

substantial glass faux pearls for a luxuriously weightier feel



For mom's  
night in

❖ **Floral Robe Set**

Pink/fuchsia floral-print two-piece set. Soft knit robe with long sleeves and self-tie belt. Sleeveless sleep shirt with round neckline. Polyester/spandex. Center back length for both 25" on M, 36" on 1X. Machine wash and dry. Imported.

S(4-6) 221-816

M(8-10) 221-825

L(12-14) 221-848

XL(16) 221-854

1X(18W-20W) 221-869

2X(22W-24W) 221-873

3X(26W-28W) 221-888

reg. \$59

**\$47 the set**



 **Shop AVON Online**

**Click To Shop This Brochure**

Dianne Hernandez Ind. Avon Representative







necklace set



**Mom and Me—  
One for You, One  
for Me Collection**  
Goldtone sets  
displayed on  
specialty cards,  
perfect for gifting.

**Necklace Set**  
Set of two. Pendants  
are scripted with  
"Mom" and "Mini"  
and accented with  
delicate pearly  
hearts. 16 1/2" L with  
3 1/2" extender.  
Each pendant,  
1" W. Lobster  
closure. **223-603**  
reg. \$17  
**\$13 the set**



bracelet set:  
half-sun charms with  
mother-of-pearl  
pair together to form  
a complete sun

**Bracelet Set**

Set of two matching half-sun charms with genuine mother-of-pearl inlay. The two charms come together to form a complete sun. 7 1/2" L with 1" extender. Each charm, 1" W. Lobster closure. **223-618** reg. \$14



**Shop AVON Online**

**Click To Shop This Brochure**

Dianne Hernandez Ind. Avon Representative



LIMITED EDITION

## More mommy & me time



**Hello Kitty®  
Purrfect Time  
Watch**

Blush leather-like strap, 9½" L with buckle closure. Blush case, 26mm diam. Dial features Hello Kitty with silver-colored numerals.  
**223-622**  
reg. \$43

**\$33**



**Hello Kitty®  
Playtime LCD  
Watch**

Strap features colorful florals and Hello Kitty characters. 9½" L with buckle closure. Pink case features Hello Kitty, 24mm diam. Digital watch includes date and light-up function.  
**223-637**  
reg. \$40

**\$30**



**Darling Heart Initial Necklace**

Soft pink enamel pendant with letter, pearly bead accent and goldtone heart charm. Goldtone chain, 16½" L with 3½" extender. Pendant, approx. 1" L. reg. \$13

**\$10 each**

Show her expressions of love



**Shop AVON Online**

Click To Shop This Brochure

Dianne Hernandez Ind. Avon Representative



**LIMITED EDITION**

**Heartlink Collection**

Three layers of goldtone chains with heart-shaped links or pearly heart beads.

**Layered Necklace**

Shortest layer, 16½" L; longest layer, 18½" L with 3½" extender.

**226-511**

reg. \$25

**\$20**

**Band Ring**

Stack-like design with row of pearly beads.

Approx. ¼" W.

6 226-602 8 226-640 10 226-655

reg. \$13

**\$10**

**Earring Pack**

Five pairs of mixed shapes; bows with pearly detail.

Largest, ½" L.

Pierced.

**226-583**

reg. \$23

**\$17 the pack**

**Layered Bracelet**

7¼" L with 1" extender.

**226-579**

reg. \$23

**\$17**



set of 5 pairs



LIMITED EDITION

## Give her the finer things

**Bloom and Bond Statement Collection**  
Bold goldtone designs.

**Necklace**

Chunky link design.  
16½" L with 3½"  
extender. Approx. ½" W.  
**226-674**  
reg. \$25

**\$20**

**Ring**  
Floral designs  
with soft violet-  
colored center stone.  
Approx. 1" W.

6 226-712

8 226-727

10 226-731

reg. \$13

**\$10**

**Earrings**  
Floral drops and  
soft violet-  
colored stone.  
Approx. 1¾" L.

Pierced.

**226-708**

reg. \$20

**\$15**

 **Shop AVON Online**

**Click To Shop This Brochure**

Dianne Hernandez Ind. Avon Representative





**Petal Treasures Shaky Necklace**  
Heart-shaped pendant filled with delicate floral shapes and colorful crystal-like accents that move when shaken. Rose goldtone ball-station chain, 16 1/2" L with 3 1/2" extender. Pendant, approx. 1" L. **226-750** reg. \$20  
**\$15**

**STERLING SILVER**



**Sterling Silver Bow of Affection CZ Collection**  
CZ stones set in .925 sterling silver.

**Necklace**  
17" L with 1" extender. Pendant, 1" L. Spring-ring closure. **220-949** reg. \$49.99  
**\$39.99**

**Earrings**  
Pierced studs, 1/4" L. **220-953** reg. \$44.99  
**\$34.99**

**Bracelet**  
One size fits most. .75-carat total weight equivalent. **221-228** reg. \$49.99  
**\$39.99**

**STAINLESS STEEL**



**Earrings**  
1" L. 1-carat total weight equivalent. Pierced. **220-968** reg. \$49.99  
**\$39.99**



**Forever Daisy Stainless Steel Aqua CZ Collection**  
Aqua-colored CZ center stone with clear stone accents set in stainless steel.

**Necklace**  
17" L with 1" extender. .75-carat total weight equivalent. **456-911** reg. \$46.99  
**\$36.99**

**Ring**  
1/2" W. .5-carat total weight equivalent.  
Sizes:  
5 **220-972** 8 **221-008**  
6 **220-987** 9 **221-065**  
7 **220-991** 10 **221-103**  
reg. \$46.99  
**\$36.99**



# Because she's scentsational

## RARE PEARLS GIFT SET

Soft floral. Magnolia, white pepper and rosewood.

Includes:

- Eau de Parfum 1.7 fl. oz.
- Hand Cream 2.5 fl. oz.
- Body Lotion 6.7 fl. oz.

**\$26.99**

**3-PIECE SET**

486-765

**\$56 VALUE**



## FREE

MOTHER'S DAY GIFT BAG

on any gift set purchase

**Shop AVON Online**

**Click To Shop This Brochure**

Dianne Hernandez Ind. Avon Representative



**FAR AWAY GIFT SET**

Amber floral. Freesia, jasmine and amber.

Includes:

- Eau de Parfum 1.7 fl. oz.
- Body Lotion 6.7 fl. oz.
- Hand Cream 2.5 fl. oz.

**\$26.99**

3-PIECE SET

253-390

\$56 VALUE



**HAIKU GIFT SET**

Fresh green. Japanese yuzu, delicate muguet and blonde woods.

Includes:

- Eau de Parfum 1.7 fl. oz.
- Body Lotion 6.7 fl. oz.
- Hand Cream 2.5 fl. oz.

**\$26.99**

3-PIECE SET

221-448

\$56 VALUE

**IMARI GIFT SET**

Soft amber. Bergamot, jasmine and amber.

Includes:

- Eau de Toilette 1.7 fl. oz.
- Roll-On Anti-Perspirant Deodorant 2.6 fl. oz.
- Perfumed Skin Softener 5 fl. oz.

**\$23.99**

3-PIECE SET

221-577

\$45.25 VALUE



NEW! LIMITED EDITION

Surround her with pure bliss



**HAIKU KYOTO FLOWER DIFFUSER TILE GIFT SET**

Fresh green. Violet leaf, white peony and soft cotton musk. Hang or place the scented tile in your preferred location.

Includes:

- Haiku Kyoto Flower Mini Eau de Parfum, 1.3 fl. oz.
- Embossed diffuser tile, clay, approx. 2 1/4" H x 2 1/4" W.
- Decorative ribbon, polyester.

**\$25**

**BOXED 3-PIECE SET**  
221-730



**Shop AVON Online**

**Click To Shop This Brochure**

Dianne Hernandez Ind. Avon Representative



#### ANEW ULTIMATE GIFT SET

Combat multiple signs of aging.

Includes:

- Multi-Performance Eye System Cream, .5 oz. net wt.  
Elixir, .09 oz. net wt.
- Multi-Performance Day Cream Broad Spectrum SPF 25  
1.7 oz. net wt.
- Multi-Performance Night Cream  
1.7 oz. net wt.

\$59.99

3-PIECE SET

253-131

\$126 VALUE



#### ANEW PLATINUM GIFT SET

Lift your look with gravity-defying results.

Includes:

- Eye & Lip Cream  
Dual applicator, .5 oz. net wt.
- Day Cream Broad Spectrum SPF 25  
1.7 oz. net wt.
- Night Cream  
1.7 oz. net wt.

\$59.99

3-PIECE SET

253-222

\$126 VALUE

## FREE MOTHER'S DAY GIFT BAG (\$3 value) with any gift set purchase

pages 160-163

White/fuchsia floral print. Includes gift tag and a sheet of tissue paper. Paper with grosgrain ribbon handles.  
8" L x 3 1/4" W x 10 1/2" H.



### BROW DEFINERS



### EYELINERS



### LIP LINERS



fmg Glimmer Liners for Brows, Eyes and Lips  
Long-wearing. Retractable. Formulated without parabens, sulfates and talc. Each .01 oz. net wt. reg. \$9

**\$2.99** each  
incredible value!



**GRAB & GO  
MAKEUP  
SALE!**



**OVER  
40 MILLION  
SOLD  
and counting**

© 2026 The Avon Company. All rights reserved. \*Based on 2016-2025 sales.

CAMPAIGN 9, 2026  
THE AVON COMPANY  
165 BROADWAY, NY, NY 10006



Please order by

**MAY 5  
2026**

[Click Here](#) to Order Online.

Or contact me for personal assistance!

**Dianne Hernandez - Ind Avon Rep**

**TEXT or CALL: (562) 967-1473**

**Email: Dianne@Beauty2Makep.com**